

# Nathan Palm Angus

5th Annual  
**PRODUCTION SALE**

Sunday, **FEBRUARY 19**, 2017

Glacial Lakes Livestock Sale Facility, Watertown, SD



PALM Renegade 5054



PALM Discovery 5032



PALM Tour of Duty 5023



PALM Prophet 5008

# Welcome

**Dear Cattlemen,**

Welcome to OUR 5th Annual Production Sale! I say OUR because of you. You have become a partner in this sale. Your success translates into my success. Your confidence in buying my bulls makes you my partner in business and my friend, as we share good times and bad times.

How can I say this? I take what I do very seriously! I want you to be successful. Being in the cattle business can make an individual very humble. Staying humble is one of the reasons we do what we do. We love to see that new born calf on that fresh green grass of spring. New life...new beginning...new opportunities!

**NEW OPPORTUNITIES:** I am partnering with some new people. First, John Blohm from Reinbeck, Iowa, will be raising ET yearling bull calves for me. John calves the end of December, January and February. Our goal here is to offer you the newest and best genetics available.

Second, Glenn Davis, herd manager for Linz Heritage Beef, is working as a consultant for me. Glenn's knowledge of the Angus breed is unparalleled and his philosophy is similar to mine in that we as seed stock producers need to make perfect matings. Not only is Glenn helping me with this, but the most important part for you as a potential buyer is that Linz Heritage Beef is looking to source Angus cattle for their business. It is important that you contact me so that Glenn and I can get you started on premiums for your cattle. My bulls, whether it's current or past sellers will qualify for their program.

Now it's time for some homework. Buying a bull is easy. There are bulls for sale every day of the year. But, the tricky part is finding the RIGHT bull for your cows and for your program.

- **Number 1.** Find a program that sells bulls that fit your environment. I don't know ANY commercial cow/calf operation that has calves that wean at 205 days and weigh 800-1,000 pounds. So buying a bull with a 1,000 pound weaning weight does NOTHING for you. The feedlot and packer could care less and frankly, the consumer has NO IDEA what weaning weight means. It has no influence in the consumer's decision to buy a steak, roast or hamburger.
- **Number 2.** Please buy a bull that produces calves that fits the buyer of your calves. Sounds easy, but it is not! Ask the questions; How did your calves work for your buyers in the past? Ask your seed stock provider what bull fits your market? Is the dam of the bull you're buying the type of cow you want in your herd?

With appreciation, I hope to see you at my sale. I am confident you will be satisfied in the quality and variety of the Angus cattle offered.

Sincerely,

*Nathan C. Palm*

# NATHAN PALM ANGUS

5th Annual Production Sale

## Sunday FEBRUARY 19, 2017 • 1:00 pm

Held at the Glacial Lakes Livestock Sale Facility • Watertown, SD

**SALE DAY PHONES:**

(605) 690-2019 Nathan  
(605) 886-5052 Sale Barn

**AUCTIONEER:**

Harley Lamb..... (C) 605-881-5529

**SALE CONSULTANT:**

Glenn Davis ..... 219-776-7584

**LIVESTOCK PUBLICATION REPRESENTATIVES**

Donnie Leddy, Cattle Business Weekly ..... 605-695-0113  
Chris Effling, Tri-State Livestock News..... 605-769-0142

**SALE LOCATION:**

Lakes Livestock Auction Facility - 605-886-5052  
1005 9th Avenue SW, Watertown, SD 57201

**Directions** - The sale facility is located NW of the junction of Highway 20 and 212. From Interstate 29 take Exit 177 then go west on Hwy 212

**SEMEN INTEREST:**

Nathan Palm Angus will retain 1/4 semen interest in all the bulls.

If any, changes will be stated at the sale. Look for updated EPDs and supplemental sheet at sale.



**FREE KEEP** until April 1, 2017. After April 1 boarding cost will be \$3 per day, per head.

Pictures, Videos and Updates Available at: [www.nathanpalmangus.com](http://www.nathanpalmangus.com)

**ACCOMMODATIONS:**

**Holiday Inn Express & Suites** • 605-882-3636  
3900 9th Ave. SE, Watertown, SD  
**Hampton Inn & Suites** • 605-878-1800  
2720 9th Ave, Watertown, SD  
**Super 8 Hotel** • 605-882-1900  
503 14th Ave. SE, Watertown, SD

**TERMS & CONDITIONS:** Cattle will sell under the suggested Terms and Conditions of the American Angus Association ([http://www.angus.org/Pub/suggested\\_sale\\_terms.pdf](http://www.angus.org/Pub/suggested_sale_terms.pdf)).

**LIABILITY:** All persons who attend this sale do so at their own risk, legal or otherwise, for their safety or for the behavior of the animals. The owners and the sale staff assume no liability for property loss or any accident that may occur.

**HERD HEALTH:** All cattle will be accompanied by proper health certificates for immediate shipment. • All Bulls Are Johnes Tested.  
• All Young Cattle Have Zoetis 50K Enhanced EPD Profiles

**TRUCKING:**

Truckers believed to be reliable will be available to assist you in shipping your purchases.

**LIVESTOCK MORTALITY INSURANCE:** To properly insure your investment, an agent from Martin-Trudeau Insurance will be on hand sale day. Palm Angus will pay 1/2 of the premium for mortality insurance on 2-year-old bulls purchased for \$4,000 or more and 1/2 of the premium on Yearling bulls purchased for \$3,000 or more.

**SUPPLEMENTAL INFORMATION:**

A supplemental sheet will be available sale day with complete and up to date calving information. Announcements from auction block regarding the cattle selling in this sale take precedence over information listed in this sale book. Up-to-date genetic recessive status can be viewed online at [www.angus.org](http://www.angus.org).

**FOOD AND REFRESHMENTS:** Available sale day.

**50K DATA:** You will notice that our EPD accuracies are much higher than most bulls being offered for sale. This is a reflection of our DNA analysis on each bull we sell. If you would like to review the Zoetis i50K data on any of our bulls, we would be happy to share this information with you.

**DIRECTIONS TO THE FARM TO PREVIEW CATTLE PRIOR TO SALE DAY:**

18725 472nd Avenue, Estelline, 57234 SD  
- From Interstate 29 take Exit 157. Go East 2.5 miles then go North on 472nd Avenue about 3/4 mile.  
- From Clear Lake, SD - Go 6 miles South on Highway 15 then go West for 4 miles on 188th St. Go 3/4 mile North on 472 Avenue.

# Reference Sire S A V Resource 1441



BD: 01/07/2011

Bull +17016597

Tattoo: 1441

R R RITO 707  
**RITO 707 OF IDEAL 3407 7075**  
 +13066860 IDEAL 3407 OF 1418 076

S A V 8180 TRAVELER 004  
**S A V BLACKCAP MAY 4136**  
 14739095 S A V MAY 2397

RITO N BAR  
 ERISKAY OF ROLLIN ROCK 3  
 IDEAL 1418 OF 8103 4286  
 IDEAL 076 OF 692 8375  
 SITZ TRAVELER 8180  
 BOYD FOREVER LADY 8003  
 S A F 598 BANDO 5175  
 S A V MAY 7238

|               |
|---------------|
| <b>MARB</b>   |
| .23           |
| <b>RE</b>     |
| 1.36          |
| <b>SW</b>     |
| 63.66         |
| <b>SB</b>     |
| 170.26        |
| <b>ACT BW</b> |
|               |

| CED | BEPD | WEPD | YEPD | SC | MILK |
|-----|------|------|------|----|------|
| -4  | .74  | 3.6  | .96  | 70 | .94  |
| 132 | .91  | 1.51 | .92  | 23 | .72  |

I first used Resource because he was a "4136" son. I like what he does. His progeny are slick haired, moderate framed and easy keeping. His calves are muscular and dense. They surprise you when you weigh them. His daughters have a very maternal easy keeping look. I feel they fit best in low input environment. The steers will feed well and the heifers will make good cows.

## *Selling 12 Sons, 1 Daughter*

### *To better serve you:*

I will be taking all bulls home after the sale. I will do the best that I can do to take care of your bull/bulls, but things happen. That is why I'm offering to cover half of the cost of insurance on your bulls. Please contact me for more details and to answer any questions.

Second, these older bulls do not like to be worked with any more than necessary. In the past, I have semen tested before the sale and paid for semen testing again before breeding season. This year, to save time and possible injuries, I will semen test around April 1st and then deliver your bulls. If for any reason they don't pass the semen test, I will offer to you first pick of my private treaty bulls.

### Performance testing and weights:

This will be the first year that I give you a glimpse into weaning and yearling weights of my cattle. I have had them before but was advised not to publish them because they were lighter than everyone else's.

### *My Goals:*

1. I want my bull calves to wean at or around 700 pounds.
2. I shoot for the bulls to come off grass at 14-16 months of age weighing 1,100 pounds.
3. Target weight for my strong aged bulls for the sale is 1,500-1,700 pounds.
4. The goal is to have a 1600-1800 pound bull at the time you turn them loose with cows with a mature weight of approximately 2000 pounds.
5. My challenges to meet these goals include offering the bulls enough exercise yet keep them contained in their lot or pasture. At the time of the sale, bulls' diet consists of corn silage, ground alfalfa hay, haylage and free choice grass hay. They are headed towards the same ration that I feed my own cows. They have never had any distiller grain.



# 1 PALM Renegade 5054

**BD:** 05/16/15    **Bull** 18589471    **Tattoo:** 5054

|  |                             |                            |               |
|--|-----------------------------|----------------------------|---------------|
| <b>S A V RESOURCE 1441</b><br>17016597 | RITO 707 OF IDEAL 3407 7075 | R R RITO 707               | <b>MARB</b>   |
|  | S A V BLACKCAP MAY 4136     | IDEAL 3407 OF 1418 076     | 0.09          |
| <b>PALM ERICA 212</b><br>17472825      | CONNEALY CONFIDENCE 0100    | CONNEALY TOBIN             | <b>RE</b>     |
|  | LAGRAND ERICA 7386          | BECKA GALA OF CONANGA 8281 | 1.13          |
|  |                             | K C F BENNETT TOTAL        | <b>SW</b>     |
|  |                             | LAGRAND ERICA 5873         | 67.41         |
|  |                             |                            | <b>\$B</b>    |
|  |                             |                            | 135.09        |
|  |                             |                            | <b>ACT BW</b> |
|  |                             |                            | 92            |

| CED  | BEPD | WEPD | YEPD | SC   | MILK | ACT BW |
|------|------|------|------|------|------|--------|
| 4    | 0.33 | 0.7  | 0.36 | 59   | 0.28 | 106    |
| 0.33 | 0.7  | 0.36 | 59   | 0.28 | 106  | 0.33   |
| 0.95 | .40  | 22   | 0.21 |      |      |        |

| CED | BW | WW | YW | DMI | YH | SC | DOC | HP | CEM | MILK | MW | MH  | CW | Marb | RE | Fat | Tend |
|-----|----|----|----|-----|----|----|-----|----|-----|------|----|-----|----|------|----|-----|------|
| 68  | 37 | 24 | 26 | 41  | 98 | 49 | 13  | 60 | 94  | 65   | 96 | 100 | 47 | 100  | 35 | 80  | 67   |

**YW/Ratio:** 1190/106

- His dam, PALM Erica 212, is one of the most powerful Confidence females there is. I guarantee you will be seeing a lot more of this cow.
- I really like this bull. He is big boned and muscular made bull. He is very wide based and moves smooth with authority.
- Everything fits with this bull. His EPDs, his pedigree, and his looks are believable. An honest good bull.
- Fatten his steers & keep his daughters & I guarantee the packer & your neighbors will "like" you cattle.
- I challenge you to find another bull with this amount of growth, milk EPD number, and have a SEN EPD of +5.17

# 2 PALM Resource 5037

**BD:** 05/09/15    **Bull** 18643502    **Tattoo:** 5037

|  |                             |                            |               |
|--|-----------------------------|----------------------------|---------------|
| <b>S A V RESOURCE 1441</b><br>17016597 | RITO 707 OF IDEAL 3407 7075 | R R RITO 707               | <b>MARB</b>   |
|  | S A V BLACKCAP MAY 4136     | IDEAL 3407 OF 1418 076     | 0.29          |
| <b>PALM ERICA 212</b><br>17472825      | CONNEALY CONFIDENCE 0100    | CONNEALY TOBIN             | <b>RE</b>     |
|  | LAGRAND ERICA 7386          | BECKA GALA OF CONANGA 8281 | 1.19          |
|  |                             | K C F BENNETT TOTAL        | <b>SW</b>     |
|  |                             | LAGRAND ERICA 5873         | 54.5          |
|  |                             |                            | <b>\$B</b>    |
|  |                             |                            | 143.06        |
|  |                             |                            | <b>ACT BW</b> |
|  |                             |                            | 81            |

| CED  | BEPD | WEPD | YEPD | SC   | MILK | ACT BW |
|------|------|------|------|------|------|--------|
| 3    | 0.33 | 1.7  | 0.36 | 55   | 0.28 | 105    |
| 0.33 | 1.7  | 0.36 | 55   | 0.28 | 105  | 0.33   |
| 0.92 | .40  | 20   | 0.21 |      |      |        |

| CED | BW | WW | YW | DMI | YH | SC | DOC | HP | CEM | MILK | MW | MH | CW | Marb | RE | Fat | Tend |
|-----|----|----|----|-----|----|----|-----|----|-----|------|----|----|----|------|----|-----|------|
| 73  | 60 | 41 | 29 | 47  | 99 | 51 | 17  | 38 | 76  | 80   | 87 | 99 | 40 | 99   | 26 | 94  | 31   |

**YW/Ratio:** 1132/101

- Flush brother to "Renegade"
- A little shorter stature but longer spined than Renegade
- If you don't get Renegade bought, don't fret. This guy is pretty darn good
- Very muscular, wide based bull
- Moves with a smooth athletic stride

# 3 PALM Rolex 5021

BD: 05/04/15 Bull 18520173 Tattoo: 5021

|                             |                              |               |
|-----------------------------|------------------------------|---------------|
| RITO 707 OF IDEAL 3407 7075 | R R RITO 707                 | <b>MARB</b>   |
| S A V RESOURCE 1441         | IDEAL 3407 OF 1418 076       | 0.67          |
| 17016597                    | S A V 8180 TRAVELER 004      | <b>RE</b>     |
| S A V BLACKCAP MAY 4136     | S A V MAY 2397               | 0.78          |
|                             | C A FUTURE DIRECTION 5321    | <b>SW</b>     |
| ALC BIG EYE D09N            | ALC HAZEL L12L               | 53.87         |
| <b>ALC EVERGREEN L74U</b>   | BALDRIDGE NOTCH A C          | <b>\$B</b>    |
| 16020719                    | ALC BALDRIDGE EVERGREEN R15F | 146.63        |
|                             |                              | <b>ACT BW</b> |
|                             |                              | 86            |

| CED  | BEPD | WEPD | YEPD | SC   | MILK | ACT BW |
|------|------|------|------|------|------|--------|
| -2   | 0.33 | 3.1  | 0.37 | 58   | 0.29 | 103    |
| 0.33 | 1.59 | .40  | 21   | 0.22 |      |        |

| CED | BW | WW | YW | DMI | YH | SC | DOC | HP | CEM | MILK | MW | MH | CW | Marb | RE | Fat | Tend |
|-----|----|----|----|-----|----|----|-----|----|-----|------|----|----|----|------|----|-----|------|
| 93  | 95 | 22 | 31 | 33  | 72 | 7  | 14  | 76 | 98  | 56   | 75 | 81 | 45 | 63   | 58 | 86  | 24   |

YW/Ratio: 1210/108

- Resource out of ALC Big Eye daughter.
- Timeless pedigree: Resource, 4136, Big Eye, Baldrige Notch, Right Time, Miss Traveler58. Maternal plus performance.
- Dam is a typical powerful Big Eye daughter.
- Rolex's full little sister is awesome. She will be one of my best replacement heifers from the class of 2016
- Performance, maternal and carcass all rolled into one!



# 4 PALM Resource 5007

BD: 04/19/15 Bull 18625537 Tattoo: 5007

|                                    |                              |               |
|------------------------------------|------------------------------|---------------|
| RITO 707 OF IDEAL 3407 7075        | R R RITO 707                 | <b>MARB</b>   |
| S A V RESOURCE 1441                | IDEAL 3407 OF 1418 076       | 0.23          |
| 17016597                           | S A V 8180 TRAVELER 004      | <b>RE</b>     |
| S A V BLACKCAP MAY 4136            | S A V MAY 2397               | 0.7           |
|                                    | HERO 6267 OF R R 2418        | <b>SW</b>     |
| H A IMAGE MAKER 0415               | H A RITO BLACKCAP 9038       | 69.62         |
| <b>S A F IMAKER AIRA ELLA 4047</b> | PLAINVIEW NEW DESIGN 878 40A | <b>\$B</b>    |
| 15937808                           | M J AIRA ELLA 409D 579       | 147.48        |
|                                    |                              | <b>ACT BW</b> |
|                                    |                              | 72            |

| CED  | BEPD | WEPD | YEPD | SC   | MILK | ACT BW |
|------|------|------|------|------|------|--------|
| 4    | 0.34 | 1.7  | 0.38 | 64   | 0.3  | 114    |
| 0.33 | 1.33 | .40  | 26   | 0.24 |      |        |

| CED | BW | WW | YW | DMI | YH | SC | DOC | HP | CEM | MILK | MW | MH | CW | Marb | RE | Fat | Tend |
|-----|----|----|----|-----|----|----|-----|----|-----|------|----|----|----|------|----|-----|------|
| 73  | 63 | 4  | 5  | 57  | 71 | 16 | 19  | 42 | 96  | 38   | 68 | 46 | 24 | 97   | 69 | 27  | 37   |

YW/Ratio: 1200/108

- Good solid bull
- Maternal brother by SAV Harvester sold to LeWayne Krause as a yearling in 2015 sale
- Last calf from a cow I bought from Eric Solssa

# 5 PALM Resource 5020

BD: 05/04/15 Bull 18671453 Tattoo: 5020

|                             |                            |               |
|-----------------------------|----------------------------|---------------|
| RITO 707 OF IDEAL 3407 7075 | R R RITO 707               | <b>MARB</b>   |
| S A V RESOURCE 1441         | IDEAL 3407 OF 1418 076     | 0.43          |
| 17016597                    | S A V 8180 TRAVELER 004    | <b>RE</b>     |
| S A V BLACKCAP MAY 4136     | S A V MAY 2397             | 0.81          |
|                             | SYDGEN C C & 7             | <b>SW</b>     |
| H&K CC&7 G4                 | BLKCP EMPRESS ELLSTON X216 | 47.86         |
| <b>PALM BURGESS 280</b>     | ALC REBOUND T02R           | <b>\$B</b>    |
| 18645455                    | ALC BURGESS 13U            | 137.07        |
|                             |                            | <b>ACT BW</b> |
|                             |                            | 74            |

| CED | BEPD | WEPD | YEPD | SC  | MILK | ACT BW |
|-----|------|------|------|-----|------|--------|
| 0   | .30  | +2.6 | .34  | 53  | .26  | 96     |
| .31 | .74  | .39  | 22   | .19 |      |        |

| CED | BW | WW | YW | DMI | YH | SC | DOC | HP | CEM | MILK | MW | MH | CW | Marb | RE | Fat | Tend |
|-----|----|----|----|-----|----|----|-----|----|-----|------|----|----|----|------|----|-----|------|
| 94  | 81 | 30 | 27 | 14  | 49 | 45 | 5   | 32 | 99  | 88   | 45 | 68 | 64 | 86   | 58 | 24  | 55   |

YW/Ratio: 1216/109

- Another good solid bull by Resource
- Maternal pedigree: maternal grandsire 'G4' sold in same sale as Hoover Dam. G4 is bigger boned and has more frame than Hoover Dam
- Lots of muscle expression
- 3/4 brother to Lot 6

# 6 PALM Resource 5025

BD: 05/06/15 Bull 18625538 Tattoo: 5025

|                             |                            |               |
|-----------------------------|----------------------------|---------------|
| RITO 707 OF IDEAL 3407 7075 | R R RITO 707               | <b>MARB</b>   |
| S A V RESOURCE 1441         | IDEAL 3407 OF 1418 076     | 0.29          |
| 17016597                    | S A V 8180 TRAVELER 004    | <b>RE</b>     |
| S A V BLACKCAP MAY 4136     | S A V MAY 2397             | 1.14          |
|                             | SYDGEN C C & 7             | <b>SW</b>     |
| H&K CC&7 G4                 | BLKCP EMPRESS ELLSTON X216 | 55.55         |
| <b>PALM BLACKCAP 129</b>    | G A R RETAIL PRODUCT       | <b>\$B</b>    |
| 17344210                    | ALC BLACKCAP P17T          | 141.83        |
|                             |                            | <b>ACT BW</b> |
|                             |                            | 74            |

| CED  | BEPD | WEPD | YEPD | SC   | MILK | ACT BW |
|------|------|------|------|------|------|--------|
| 3    | 0.31 | 2.8  | 0.34 | 57   | 0.27 | 103    |
| 0.31 | 0.55 | .39  | 24   | 0.19 |      |        |

| CED | BW | WW | YW | DMI | YH | SC | DOC | HP | CEM | MILK | MW | MH | CW | Marb | RE | Fat | Tend |
|-----|----|----|----|-----|----|----|-----|----|-----|------|----|----|----|------|----|-----|------|
| 88  | 83 | 21 | 18 | 54  | 77 | 53 | 14  | 13 | 95  | 57   | 67 | 58 | 24 | 92   | 20 | 78  | 43   |

YW/Ratio: 1136/102

- Resource worked well on my G4 daughters
- Lots of muscle expression
- Buy Lot 5 and Lot 6 and produce fantastic steers and awesome replacement heifers

# 7 PALM Resource 5039

BD: 05/09/15 Bull 18671713 Tattoo: 5039

|                                |                            |               |
|--------------------------------|----------------------------|---------------|
| RITO 707 OF IDEAL 3407 7075    | R R RITO 707               | <b>MARB</b>   |
| S A V RESOURCE 1441            | IDEAL 3407 OF 1418 076     | <b>RE</b>     |
| 17016597                       | S A V 8180 TRAVELER 004    |               |
| S A V BLACKCAP MAY 4136        | S A V MAY 2397             | <b>SW</b>     |
|                                | WERNER WAR PARTY 2417      | 57.64         |
| R B TOUR OF DUTY 177           | B A LADY 6807 305          | <b>\$B</b>    |
| <b>CAV LADY TOUR 9740-3974</b> | LCC NEW STANDARD           |               |
| 17544952                       | R B LADY STANDARD 9740-739 |               |
|                                |                            | <b>ACT BW</b> |
|                                |                            | 84            |

| CED  | BEPD | WEPD | YEPD | SC | MILK | ACT BW |
|------|------|------|------|----|------|--------|
| 3    | 0.05 | 1.9  | 0.05 | 68 | 0.05 | 123    |
| 0.05 | 0.05 | 123  | 0.05 |    |      |        |

| CED | BW | WW | YW | DMI | YH | SC | DOC | HP | CEM | MILK | MW | MH | CW | Marb | RE | Fat | Tend |
|-----|----|----|----|-----|----|----|-----|----|-----|------|----|----|----|------|----|-----|------|
| 68  | 56 | 9  | 5  | 55  | 69 | 3  | 1   | 41 | 93  | 7    | 64 | 54 | 47 | 92   | 46 | 19  | 88   |

YW/Ratio: 1060/95

- Dam sells as Lot 47
- Wow! Blackcap May and Lady cow families together... can't go wrong here!!!
- Maternal, maternal, maternal!
- Flush brother to Lot 8 PALM Resource 5043. Put these two together and I guarantee you will have very marketable calves in one generation

# 8 PALM Resource 5043

BD: 05/12/15 Bull 18671715 Tattoo: 5043

|                             |  |                         |             |
|-----------------------------|--|-------------------------|-------------|
| RITO 707 OF IDEAL 3407 7075 |  | R R RITO 707            | <b>MARB</b> |
| S A V RESOURCE 1441         |  | IDEAL 3407 OF 1418 076  | 0.37        |
| 17016597                    |  | S A V 8180 TRAVELER 004 | <b>RE</b>   |
| S A V BLACKCAP MAY 4136     |  | S A V MAY 2397          | 0.82        |
| R B TOUR OF DUTY 177        |  | WERNER WAR PARTY 2417   | <b>SW</b>   |
| CAV LADY TOUR 9740-3974     |  | B A LADY 6807 305       | 78.22       |
| 17544952                    |  | LCC NEW STANDARD        | <b>SB</b>   |
| R B LADY STANDARD 9740-739  |  | R B LADY FOCUS 013-739  | 152.89      |

| CED | BE PD | WE PD | YE PD | SC  | MILK | ACT BW |
|-----|-------|-------|-------|-----|------|--------|
| 4   | .33   | 1.6   | .37   | 67  | .29  | 120    |
| .32 | 1.12  | .40   | 31    | .20 | 76   |        |

| CED | BW | WW | YW | DMI | YH | SC | DOC | HP | CEM | MILK | MW | MH | CW | Marb | RE | Fat | Tend |
|-----|----|----|----|-----|----|----|-----|----|-----|------|----|----|----|------|----|-----|------|
| 77  | 61 | 2  | 2  | 65  | 52 | 16 | 1   | 28 | 93  | 5    | 80 | 64 | 27 | 91   | 67 | 57  | 71   |

YW/Ratio: 1042/93

- Dam sells as Lot 47
- Maternal, maternal, maternal!
- Flush brother is 5039. Put these two together and I guarantee you will have very marketable calves in one generation

# 10 PALM Resource 5046

BD: 05/12/15 Bull 18643513 Tattoo: 5046

|                             |  |                         |             |
|-----------------------------|--|-------------------------|-------------|
| RITO 707 OF IDEAL 3407 7075 |  | R R RITO 707            | <b>MARB</b> |
| S A V RESOURCE 1441         |  | IDEAL 3407 OF 1418 076  | 0.47        |
| 17016597                    |  | S A V 8180 TRAVELER 004 | <b>RE</b>   |
| S A V BLACKCAP MAY 4136     |  | S A V MAY 2397          | 1.05        |
| CONNEALY MENTOR 7374        |  | G A R RETAIL PRODUCT    | <b>SW</b>   |
| PALM DUCHESS 055            |  | EXECUTA OF CONANGA 939  | 62.38       |
| 17340326                    |  | VERMILION DATELINE 7078 | <b>SB</b>   |
| ALC DUCHESS 500L            |  | ALC EXT Z21G            | 147.09      |

| CED  | BE PD | WE PD | YE PD | SC   | MILK | ACT BW |
|------|-------|-------|-------|------|------|--------|
| 3    | 0.32  | 1.7   | 0.35  | 55   | 0.28 | 102    |
| 0.32 | 1.9   | .40   | 23    | 0.21 | 80   |        |

| CED | BW | WW | YW | DMI | YH | SC | DOC | HP | CEM | MILK | MW | MH | CW | Marb | RE | Fat | Tend |
|-----|----|----|----|-----|----|----|-----|----|-----|------|----|----|----|------|----|-----|------|
| 84  | 73 | 21 | 25 | 92  | 2  | 45 | 20  | 95 | 26  | 95   | 93 | 49 | 84 | 34   | 78 | 8   |      |

YW/Ratio: 1152/103

- Another good solid Resource son
- Dam is a good solid producer
- A little more frame to this Resource son
- Can't go wrong with these Resource sons!

# 12 PALM Resource 5076

BD: 06/13/15 Bull 18671767 Tattoo: 5076

|                             |  |                         |             |
|-----------------------------|--|-------------------------|-------------|
| RITO 707 OF IDEAL 3407 7075 |  | R R RITO 707            | <b>MARB</b> |
| S A V RESOURCE 1441         |  | IDEAL 3407 OF 1418 076  | 0.41        |
| 17016597                    |  | S A V 8180 TRAVELER 004 | <b>RE</b>   |
| S A V BLACKCAP MAY 4136     |  | S A V MAY 2397          | 0.78        |
| S A V NET WORTH 4200        |  | S A V 8180 TRAVELER 004 | <b>SW</b>   |
| S A V POLLY 9972            |  | S A V MAY 2410          | 52.37       |
| 16417330                    |  | PAPA EQUATOR 2928       | <b>SB</b>   |
| BR POLLY 8077-472           |  | VDAR POLLY 8077         | 158.71      |

| CED  | BE PD | WE PD | YE PD | SC   | MILK | ACT BW |
|------|-------|-------|-------|------|------|--------|
| -3   | 0.05  | 4     | 0.05  | 59   | 0.05 | 112    |
| 0.05 | 1     | .05   | 26    | 0.05 | 103  |        |

| CED | BW  | WW | YW | DMI | YH | SC | DOC | HP | CEM | MILK | MW | MH | CW | Marb | RE | Fat | Tend |
|-----|-----|----|----|-----|----|----|-----|----|-----|------|----|----|----|------|----|-----|------|
| 100 | 100 | 8  | 3  | 57  | 21 | 21 | 68  | 67 | 100 | 33   | 45 | 34 | 30 | 92   | 67 | 64  | 22   |

YW/Ratio: 1078/96

- Bigger framed Resource
- Will add pounds and growth to your calves
- Flush brother to Lot 11 PALM Resource 5068

# 9 PALM Resource 5042

BD: 05/12/15 Bull 18645457 Tattoo: 5042

|                             |  |                          |             |
|-----------------------------|--|--------------------------|-------------|
| RITO 707 OF IDEAL 3407 7075 |  | R R RITO 707             | <b>MARB</b> |
| S A V RESOURCE 1441         |  | IDEAL 3407 OF 1418 076   | 0.38        |
| 17016597                    |  | S A V 8180 TRAVELER 004  | <b>RE</b>   |
| S A V BLACKCAP MAY 4136     |  | S A V MAY 2397           | 1.17        |
| S A V PRIORITY 7283         |  | S A V FINAL ANSWER 0035  | <b>SW</b>   |
| PALM BLACKCAP MAY 359       |  | S A V BLACKCAP MAY 5530  | 58.1        |
| 18007078                    |  | S A V IRON MOUNTAIN 8066 | <b>SB</b>   |
| S A V BLACKCAP MAY 1384     |  | S A V BLACKCAP MAY 4136  | 150.16      |

| CED  | BE PD | WE PD | YE PD | SC   | MILK | ACT BW |
|------|-------|-------|-------|------|------|--------|
| -3   | 0.05  | 4     | 0.05  | 65   | 0.05 | 115    |
| 0.05 | 0.98  | .05   | 21    | 0.05 | 82   |        |

| CED | BW  | WW | YW | DMI | YH | SC | DOC | HP | CEM | MILK | MW | MH | CW | Marb | RE | Fat | Tend |
|-----|-----|----|----|-----|----|----|-----|----|-----|------|----|----|----|------|----|-----|------|
| 100 | 100 | 1  | 5  | 59  | 89 | 41 | 6   | 43 | 100 | 47   | 74 | 88 | 54 | 97   | 49 | 74  | 77   |

YW/Ratio: 1032/92

- If you are looking to make some awesome females, look no further.
- Blackcap May 4136 x Blackcap 5530 x Blackcap May 4136
- SAV breeding top to bottom

# 11 PALM Resource 5068

BD: 06/04/15 Bull 18655798 Tattoo: 5068

|                             |  |                         |             |
|-----------------------------|--|-------------------------|-------------|
| RITO 707 OF IDEAL 3407 7075 |  | R R RITO 707            | <b>MARB</b> |
| S A V RESOURCE 1441         |  | IDEAL 3407 OF 1418 076  | 0.41        |
| 17016597                    |  | S A V 8180 TRAVELER 004 | <b>RE</b>   |
| S A V BLACKCAP MAY 4136     |  | S A V MAY 2397          | 0.78        |
| S A V NET WORTH 4200        |  | S A V 8180 TRAVELER 004 | <b>SW</b>   |
| S A V POLLY 9972            |  | S A V MAY 2410          | 52.37       |
| 16417330                    |  | PAPA EQUATOR 2928       | <b>SB</b>   |
| BR POLLY 8077-472           |  | VDAR POLLY 8077         | 158.71      |

| CED  | BE PD | WE PD | YE PD | SC   | MILK | ACT BW |
|------|-------|-------|-------|------|------|--------|
| -3   | 0.05  | 4     | 0.05  | 59   | 0.05 | 112    |
| 0.05 | 1     | .05   | 26    | 0.05 | 96   |        |

| CED | BW  | WW | YW | DMI | YH | SC | DOC | HP | CEM | MILK | MW | MH | CW | Marb | RE | Fat | Tend |
|-----|-----|----|----|-----|----|----|-----|----|-----|------|----|----|----|------|----|-----|------|
| 100 | 100 | 8  | 3  | 55  | 35 | 17 | 28  | 64 | 99  | 32   | 54 | 50 | 16 | 92   | 55 | 52  | 68   |

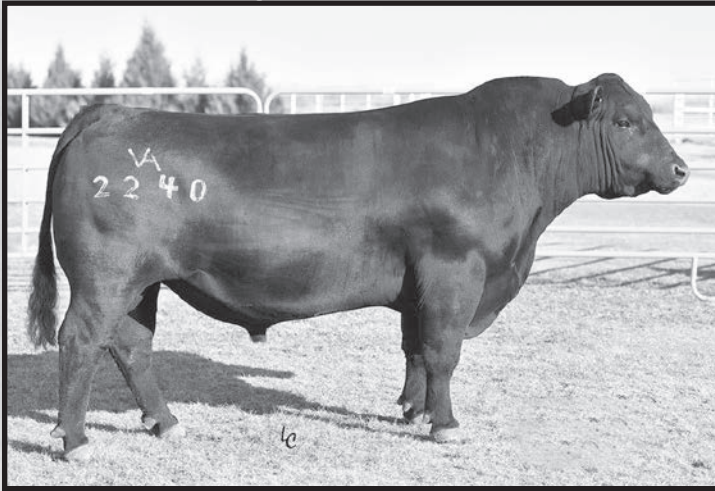
YW/Ratio: 1150/103

- Bigger framed Resource
- Will add pounds and growth to your calves
- Flush brother to Lot 12 PALM Resource 5076

**FREE KEEP** until  
**April 1, 2017.** After April  
 1 boarding cost will be  
**\$3 per day/per head.**

# Herd Sire

# VAR Discovery 2240



**BD:** 03/06/12      **Bull #**17262835      **Tattoo:** 2240

|                              |                        |                            |             |               |             |     |
|------------------------------|------------------------|----------------------------|-------------|---------------|-------------|-----|
| MYTTY IN FOCUS               |                        | S A F FOCUS OF E R         |             | <b>MARB</b>   |             |     |
| A A R TEN X 7008 S A         |                        | MYTTY COUNTLESS 906        |             | 1.10          |             |     |
| #15719841                    | A A R LADY KELTON 5551 | S A V ADAPTOR 2213         |             | <b>RE</b>     |             |     |
|                              |                        | H S A F LADY KELTON 504B   |             | .43           |             |     |
|                              |                        | CONNEALY ONWARD            |             | <b>SW</b>     |             |     |
|                              | SITZ UPWARD 307R       | SITZ HENRIETTA PRIDE 81M   |             | 81.95         |             |     |
| <b>DEER VALLEY RITA 0308</b> |                        | S S OBJECTIVE T510 OT26    |             | <b>SB</b>     |             |     |
| +16659293                    | G A R OBJECTIVE 2345   | G A R 1407 NEW DESIGN 2413 |             | 168.82        |             |     |
|                              |                        |                            |             | <b>ACT BW</b> |             |     |
| <b>CED</b>                   | <b>BEPD</b>            | <b>WEPD</b>                | <b>YEPD</b> | <b>SC</b>     | <b>MILK</b> |     |
| 5                            | .84                    | .9                         | .94         | 76            | .91         | 144 |
|                              |                        |                            |             | .86           | 2.02        | .89 |
|                              |                        |                            |             |               |             | 33  |
|                              |                        |                            |             |               |             | .25 |

Used this bull for his numbers. Calving ease, growth, maternal, carcass. Does it all. Works best on smaller framed, big barreled cows.

## 13 PALM Discovery 5032

**BD:** 05/08/15      **Bull** 18645080      **Tattoo:** 5032

|                               |                        |                            |  |               |
|-------------------------------|------------------------|----------------------------|--|---------------|
| A A R TEN X 7008 S A          |                        | MYTTY IN FOCUS             |  | <b>MARB</b>   |
| V A R DISCOVERY 2240          |                        | A A R LADY KELTON 5551     |  | 0.94          |
| 17262835                      | DEER VALLEY RITA 0308  | SITZ UPWARD 307R           |  | <b>RE</b>     |
|                               |                        | G A R OBJECTIVE 2345       |  | 0.26          |
|                               |                        | NICHOLS EXTRA H6           |  | <b>SW</b>     |
|                               | NICHOLS EXTRA K205     | NICHOLS BLACK HEIRESS F346 |  | 78.53         |
| <b>PALM BLACKBIRD LOU 201</b> |                        | S A V FINAL ANSWER 0035    |  | <b>SB</b>     |
| 18520174                      | PALM BLACKBIRD LOU 021 | STASSENS BLACKBIRD LOU 3N  |  | 139.21        |
|                               |                        |                            |  | <b>ACT BW</b> |
|                               |                        |                            |  | 86            |

|            |             |             |             |           |             |      |
|------------|-------------|-------------|-------------|-----------|-------------|------|
| <b>CED</b> | <b>BEPD</b> | <b>WEPD</b> | <b>YEPD</b> | <b>SC</b> | <b>MILK</b> |      |
| 1          | 0.33        | 2.6         | 0.34        | 72        | 0.27        | 128  |
|            |             |             |             | 0.32      | 1.96        | .40  |
|            |             |             |             |           |             | 31   |
|            |             |             |             |           |             | 0.14 |

|            |           |           |           |            |           |           |            |           |            |             |           |           |           |             |           |            |             |
|------------|-----------|-----------|-----------|------------|-----------|-----------|------------|-----------|------------|-------------|-----------|-----------|-----------|-------------|-----------|------------|-------------|
| <b>CED</b> | <b>BW</b> | <b>WW</b> | <b>YW</b> | <b>DMI</b> | <b>YH</b> | <b>SC</b> | <b>DOC</b> | <b>HP</b> | <b>CEM</b> | <b>MILK</b> | <b>MW</b> | <b>MH</b> | <b>CW</b> | <b>Marb</b> | <b>RE</b> | <b>Fat</b> | <b>Tend</b> |
| 48         | 59        | 1         | 1         | 97         | 18        | 2         | 5          | 9         | 16         | 10          | 57        | 72        | 13        | 24          | 71        | 15         | 25          |

**YW/Ratio:** 1368/122

- Wow!! This guy maybe better than his sire!
- More bone, muscle and guts than his sire
- The dam side of pedigree: Extra K205, Final Answer, New Frontier back to the performance herd of Stassen Angus.
- Personal favorite, does A LOT of things right



## 14 PALM Discovery 5009

**BD:** 04/24/15      **Bull** 18645305      **Tattoo:** 5009

|                                |                         |                         |  |               |
|--------------------------------|-------------------------|-------------------------|--|---------------|
| A A R TEN X 7008 S A           |                         | MYTTY IN FOCUS          |  | <b>MARB</b>   |
| V A R DISCOVERY 2240           |                         | A A R LADY KELTON 5551  |  | 0.75          |
| 17262835                       | DEER VALLEY RITA 0308   | SITZ UPWARD 307R        |  | <b>RE</b>     |
|                                |                         | G A R OBJECTIVE 2345    |  | 0.4           |
|                                |                         | S A F FOCUS OF E R      |  | <b>SW</b>     |
|                                | MYTTY IN FOCUS          | MYTTY COUNTLESS 906     |  | 69.71         |
| <b>PALM PRECIOUS PRIDE 909</b> |                         | BAAR USA MEATMAKER 3075 |  | <b>SB</b>     |
| 18022670                       | ALC PRECIOUS PRIDE E16T | ALC PRECIOUS PRIDE I01M |  | 127.36        |
|                                |                         |                         |  | <b>ACT BW</b> |
|                                |                         |                         |  | 79            |

|            |             |             |             |           |             |      |
|------------|-------------|-------------|-------------|-----------|-------------|------|
| <b>CED</b> | <b>BEPD</b> | <b>WEPD</b> | <b>YEPD</b> | <b>SC</b> | <b>MILK</b> |      |
| 6          | 0.33        | 0.8         | 0.34        | 62        | 0.28        | 111  |
|            |             |             |             | 0.32      | 1.64        | .40  |
|            |             |             |             |           |             | 24   |
|            |             |             |             |           |             | 0.14 |

|            |           |           |           |            |           |           |            |           |            |             |           |           |           |             |           |            |             |
|------------|-----------|-----------|-----------|------------|-----------|-----------|------------|-----------|------------|-------------|-----------|-----------|-----------|-------------|-----------|------------|-------------|
| <b>CED</b> | <b>BW</b> | <b>WW</b> | <b>YW</b> | <b>DMI</b> | <b>YH</b> | <b>SC</b> | <b>DOC</b> | <b>HP</b> | <b>CEM</b> | <b>MILK</b> | <b>MW</b> | <b>MH</b> | <b>CW</b> | <b>Marb</b> | <b>RE</b> | <b>Fat</b> | <b>Tend</b> |
| 10         | 15        | 12        | 13        | 99         | 81        | 2         | 10         | 85        | 9          | 36          | 82        | 86        | 29        | 30          | 46        | 58         | 68          |

**YW/Ratio:** 1154/103

- Another good solid cow bull
- I would like to say he is a heifer bull, but 3 generations back is big birthweight. Most of the calves will be small, but he will throw a big one from time to time
- HEIFER bull

## 15 PALM Discovery 5014

**BD:** 04/27/15      **Bull** 18671783      **Tattoo:** 5014

|                       |                       |                         |  |               |
|-----------------------|-----------------------|-------------------------|--|---------------|
| A A R TEN X 7008 S A  |                       | MYTTY IN FOCUS          |  | <b>MARB</b>   |
| V A R DISCOVERY 2240  |                       | A A R LADY KELTON 5551  |  | 0.76          |
| 17262835              | DEER VALLEY RITA 0308 | SITZ UPWARD 307R        |  | <b>RE</b>     |
|                       |                       | G A R OBJECTIVE 2345    |  | 0.31          |
|                       |                       | S A V FINAL ANSWER 0035 |  | <b>SW</b>     |
|                       | COLEMAN REGIS 904     | COLEMAN DONNA 714       |  | 71.94         |
| <b>PALM ERICA 268</b> |                       | O C C EMBLAZON 854E     |  | <b>SB</b>     |
| 18645454              | COLEMAN ERICA 814     | CASTLE HILL ERICA C035  |  | 124.69        |
|                       |                       |                         |  | <b>ACT BW</b> |
|                       |                       |                         |  | 67            |

|            |             |             |             |           |             |      |
|------------|-------------|-------------|-------------|-----------|-------------|------|
| <b>CED</b> | <b>BEPD</b> | <b>WEPD</b> | <b>YEPD</b> | <b>SC</b> | <b>MILK</b> |      |
| 12         | 0.33        | 0.1         | 0.34        | 60        | 0.28        | 107  |
|            |             |             |             | 0.32      | 0.52        | .40  |
|            |             |             |             |           |             | 28   |
|            |             |             |             |           |             | 0.14 |

|            |           |           |           |            |           |           |            |           |            |             |           |           |           |             |           |            |             |
|------------|-----------|-----------|-----------|------------|-----------|-----------|------------|-----------|------------|-------------|-----------|-----------|-----------|-------------|-----------|------------|-------------|
| <b>CED</b> | <b>BW</b> | <b>WW</b> | <b>YW</b> | <b>DMI</b> | <b>YH</b> | <b>SC</b> | <b>DOC</b> | <b>HP</b> | <b>CEM</b> | <b>MILK</b> | <b>MW</b> | <b>MH</b> | <b>CW</b> | <b>Marb</b> | <b>RE</b> | <b>Fat</b> | <b>Tend</b> |
| 2          | 11        | 16        | 19        | 85         | 96        | 54        | 32         | 77        | 8          | 29          | 79        | 95        | 30        | 42          | 65        | 41         | 23          |

**YW/Ratio:** 1156/103

- HEIFER bull
- Discovery x Regis mating, calving ease top and bottom of pedigree
- Sure fired heifer bull

# Herd Sire

# R B Tour Of Duty 177



BD: 01/07/2011

Bull +16984170

Tattoo: 177

WERNER WAR PARTY 2417  
#+16004857

BAAR USA LADY JAYE 489

B A LADY 6807 305  
+15679812

G D LADY HI FLYER 302

CONNEALY ONWARD

CONNEALY LEAD ON

ALTUNE OF CONANGA 6104

B A R EXT TRAVELER 205

CRA LADY JAYE 608 498 S EASY

CONNEALY DATELINE

VERMILION BLACKBIRD 5044

HOFF HI FLYER S C 7134

LADY VALEDICTORIAN 3 S A F

| CED | BEPD | WEPD | YEPD | SC  | MILK | MARB |
|-----|------|------|------|-----|------|------|
| 6   | .88  | 2.4  | 67   | .67 | .95  | 121  |
|     |      |      | .89  | .70 | .89  | 30   |
|     |      |      |      |     |      | .42  |

This bull used in the right place is hard to beat. He is a performance bull. I call Tour of Duty a high management bull. If you push your cows, creep your calves, wean early, push your calves so they are finished at 14 months, look no further! Not the bull to use if you want your cows to graze year round. Background our calves at 1.5 lb./day gain. Yes the order buyer will love your calves because they will be the greenest set of calves in the barn. But you are giving all the coupons to the next guy.

*Selling 8 Sons, 2 Grandsons, 4 Daughters*

## 16 PALM Tour of Duty 5023

BD: 05/05/15

Bull 18641680

Tattoo: 5023

WERNER WAR PARTY 2417  
R B TOUR OF DUTY 177  
16984170

B A LADY 6807 305

K C F BENNETT TOTAL

LAGRAND ERICA 7386  
15803182

LAGRAND ERICA 5873

CONNEALY ONWARD

BAAR USA LADY JAYE 489

VERMILION DATELINE 7078

G D LADY HI FLYER 302

SITZ ALLIANCE 6595

EXT OF CONANGA 6790

W C C SPECIAL DESIGN L309

LARKOTA ERICA 717

MARB

0.73

RE

0.72

SW

69.4

SB

163.59

ACT BW

80

| CED | BEPD | WEPD | YEPD | SC   | MILK |
|-----|------|------|------|------|------|
| 5   | 0.35 | 1.8  | 0.37 | 68   | 0.3  |
|     |      |      | 116  | 0.34 | 0.69 |
|     |      |      | .41  | 28   | 0.19 |

| CED | BW | WW | YW | DMI | YH | SC | DOC | HP | CEM | MILK | MW | MH | CW | Marb | RE | Fat | Tend |
|-----|----|----|----|-----|----|----|-----|----|-----|------|----|----|----|------|----|-----|------|
| 71  | 43 | 2  | 3  | 78  | 57 | 39 | 27  | 87 | 23  | 3    | 32 | 63 | 16 | 64   | 47 | 43  | 23   |

YW/Ratio: 1146/103

- Looky here! Dam of this bull is the granddam of Renegade 5054 and Resource 5037, Lots 1 and 2 in this sale
- One of the highest SB bulls in the sale at \$163
- I have a feeling the person who buys this bull will like him more each day
- Another personal favorite!



## 17 PALM Tour of Duty 5010

BD: 04/24/15

Bull 18641534

Tattoo: 5010

WERNER WAR PARTY 2417  
R B TOUR OF DUTY 177  
16984170

B A LADY 6807 305

SITZ UPWARD 307R

PALM LUCY 210  
17472824

CHAMPION HILL LUCY 6863

CONNEALY ONWARD

BAAR USA LADY JAYE 489

VERMILION DATELINE 7078

G D LADY HI FLYER 302

CONNEALY ONWARD

SITZ HENRIETTA PRIDE 81M

S A V NET WORTH 4200

CHAMPION HILL LUCY 3062

MARB

0.9

RE

0.81

SW

64.61

SB

150

ACT BW

71

| CED | BEPD | WEPD | YEPD | SC   | MILK |
|-----|------|------|------|------|------|
| 6   | 0.33 | 2.9  | 0.34 | 62   | 0.28 |
|     |      |      | 105  | 0.32 | 0.78 |
|     |      |      | .40  | 31   | 0.18 |

| CED | BW | WW | YW | DMI | YH | SC | DOC | HP | CEM | MILK | MW | MH | CW | Marb | RE | Fat | Tend |
|-----|----|----|----|-----|----|----|-----|----|-----|------|----|----|----|------|----|-----|------|
| 52  | 69 | 2  | 5  | 99  | 55 | 26 | 15  | 7  | 34  | 1    | 52 | 31 | 13 | 52   | 15 | 38  | 82   |

YW/Ratio: 1182/105

- Athletic, smooth shouldered
- Long spined, bugger framed bull
- Awesome numbers and proven pedigree

## 18 PALM Tour of Duty 5011

BD: 04/24/15

Bull 18674087

Tattoo: 5011

WERNER WAR PARTY 2417  
R B TOUR OF DUTY 177  
16984170

B A LADY 6807 305

S A V NET WORTH 4200

PALM RITA 332  
18645452

SAND CREEK RITA 5H11 216

CONNEALY ONWARD

BAAR USA LADY JAYE 489

VERMILION DATELINE 7078

G D LADY HI FLYER 302

S A V 8180 TRAVELER 004

S A V MAY 2410

TWIN VALLEY PRECISION E161

G A R EXT 669

MARB

0.92

RE

0.75

SW

52.62

SB

155.86

ACT BW

76

| CED | BEPD | WEPD | YEPD | SC   | MILK |
|-----|------|------|------|------|------|
| 3   | 0.33 | 3.5  | 0.35 | 54   | 0.28 |
|     |      |      | 99   | 0.32 | 0.15 |
|     |      |      | .40  | 26   | 0.18 |

| CED | BW | WW | YW | DMI | YH | SC | DOC | HP | CEM | MILK | MW | MH | CW | Marb | RE | Fat | Tend |
|-----|----|----|----|-----|----|----|-----|----|-----|------|----|----|----|------|----|-----|------|
| 76  | 83 | 17 | 11 | 97  | 53 | 69 | 84  | 64 | 22  | 4    | 82 | 69 | 10 | 39   | 20 | 58  | 83   |

YW/Ratio: 1190/107

- Biggest framed bull in offering
- Big boned, long spined
- Big hoof bull
- Very attractive, well made bull for this big of a bull

# 19 PALM Tour of Duty 5013

BD: 04/26/15

Bull

Tattoo: 5013

|                             |                   |                            |             |               |             |
|-----------------------------|-------------------|----------------------------|-------------|---------------|-------------|
| WERNER WAR PARTY 2417       |                   | CONNEALY ONWARD            |             | <b>MARB</b>   |             |
| <b>R B TOUR OF DUTY 177</b> |                   | BAAR USA LADY JAYE 489     |             | <b>RE</b>     |             |
| 16984170                    | B A LADY 6807 305 | VERMILION DATELINE 7078    |             | <b>SW</b>     |             |
| H & K CC & 7 G4             |                   | G D LADY HI FLYER 302      |             | <b>SB</b>     |             |
| PALM 335                    |                   | SYDGEN C C & 7             |             | <b>ACT BW</b> |             |
| PALM 019                    |                   | BLKCP EMPRESS ELLSTON X216 |             | 79            |             |
|                             |                   | ALC BIG EYE D09N           |             |               |             |
| <b>CED</b>                  | <b>BEPD</b>       | <b>WEPD</b>                | <b>YEPD</b> | <b>SC</b>     | <b>MILK</b> |
|                             |                   |                            |             |               |             |

YW/Ratio: 1220/109

- I really like this bull
- Long spined, lots of capacity to the ribcage
- Moves with a long smooth stride

# 21 PALM Tour of Duty 5035

BD: 05/08/15

Bull 18641545

Tattoo: 5035

|                             |                        |                         |             |               |             |
|-----------------------------|------------------------|-------------------------|-------------|---------------|-------------|
| WERNER WAR PARTY 2417       |                        | CONNEALY ONWARD         |             | <b>MARB</b>   |             |
| <b>R B TOUR OF DUTY 177</b> |                        | BAAR USA LADY JAYE 489  |             | <b>RE</b>     |             |
| 16984170                    | B A LADY 6807 305      | VERMILION DATELINE 7078 |             | <b>SW</b>     |             |
| S A V BISMARCK 5682         |                        | G A R GRID MAKER        |             | <b>SB</b>     |             |
| PALM IDEAL 123              |                        | S A V ABIGALE 0451      |             | <b>ACT BW</b> |             |
| 17346284                    | RIVER HILLS IDEAL U114 | H A TOPPER 7015         |             | 135.86        |             |
|                             |                        | BALDRIDGE IDEAL S258    |             |               |             |
| <b>CED</b>                  | <b>BEPD</b>            | <b>WEPD</b>             | <b>YEPD</b> | <b>SC</b>     | <b>MILK</b> |
| 6                           | 0.33                   | 2.3                     | 0.35        | 57            | 0.28        |
|                             |                        |                         |             | 99            | 0.32        |
|                             |                        |                         |             | 1.25          | .40         |
|                             |                        |                         |             | 24            | 0.18        |
|                             |                        |                         |             |               |             |

|            |           |           |           |            |           |           |            |           |            |             |           |           |           |             |           |            |             |
|------------|-----------|-----------|-----------|------------|-----------|-----------|------------|-----------|------------|-------------|-----------|-----------|-----------|-------------|-----------|------------|-------------|
| <b>CED</b> | <b>BW</b> | <b>WW</b> | <b>YW</b> | <b>DMI</b> | <b>YH</b> | <b>SC</b> | <b>DOC</b> | <b>HP</b> | <b>CEM</b> | <b>MILK</b> | <b>MW</b> | <b>MH</b> | <b>CW</b> | <b>Marb</b> | <b>RE</b> | <b>Fat</b> | <b>Tend</b> |
| 40         | 47        | 12        | 16        | 12         | 44        | 17        | 15         | 49        | 30         | 12          | 38        | 57        | 59        | 87          | 44        | 2          | 73          |

YW/Ratio: 1030/92

- HEIFER Bull
- Smaller famed Tour of Duty son
- Nice square hip, wide based



# 23 PALM Future Duty 5049

BD: 05/13/15

Bull 18675201

Tattoo: 5049

|                                 |                          |                          |             |               |             |
|---------------------------------|--------------------------|--------------------------|-------------|---------------|-------------|
| R B TOUR OF DUTY 177            |                          | WERNER WAR PARTY 2417    |             | <b>MARB</b>   |             |
| <b>RB FUTURE DUTY 0750-3117</b> |                          | B A LADY 6807 305        |             | <b>RE</b>     |             |
| 17704419                        | R B LADY ANSWER 750-0750 | S A V FINAL ANSWER 0035  |             | <b>SW</b>     |             |
| S A V ANGUS VALLEY 1867         |                          | R B LADY FOCUS 013-750   |             | <b>SB</b>     |             |
| PALM BLACKCAP 315               |                          | S A V IRON MOUNTAIN 8066 |             | <b>ACT BW</b> |             |
| 18674103                        | ALC BLACKCAP H18N        | S A V MAY 2397           |             | 78            |             |
|                                 |                          | HYLINE RIGHT TIME 338    |             |               |             |
|                                 |                          | ALC HEIDI JOSH           |             |               |             |
| <b>CED</b>                      | <b>BEPD</b>              | <b>WEPD</b>              | <b>YEPD</b> | <b>SC</b>     | <b>MILK</b> |
|                                 |                          |                          |             |               |             |

YW/Ratio: 1072/95

- Tour of Duty grandson
- Bought sire in 2014 from RB, used on my replacement heifers as a cleanup bull, then sold him to Stricherz Ranch of Labolt, SD as a 2-year-old in my 2015 sale

# 20 PALM Tour of Duty 5028

BD: 05/07/15

Bull 18641666

Tattoo: 5028

|                             |                       |                         |             |               |             |
|-----------------------------|-----------------------|-------------------------|-------------|---------------|-------------|
| WERNER WAR PARTY 2417       |                       | CONNEALY ONWARD         |             | <b>MARB</b>   |             |
| <b>R B TOUR OF DUTY 177</b> |                       | BAAR USA LADY JAYE 489  |             | <b>RE</b>     |             |
| 16984170                    | B A LADY 6807 305     | VERMILION DATELINE 7078 |             | <b>SW</b>     |             |
| TC GRIDIRON 258             |                       | G D LADY HI FLYER 302   |             | <b>SB</b>     |             |
| S A V EMBLYNETTE 8112       |                       | G A R GRID MAKER        |             | <b>ACT BW</b> |             |
| 16056503                    | S A V EMBLYNETTE 5266 | TC BLACKBIRD 7049       |             | 77            |             |
|                             |                       | S A V 8180 TRAVELER 004 |             |               |             |
|                             |                       | S A V EMBLYNETTE 3240   |             |               |             |
| <b>CED</b>                  | <b>BEPD</b>           | <b>WEPD</b>             | <b>YEPD</b> | <b>SC</b>     | <b>MILK</b> |
| 9                           | 0.34                  | 2.2                     | 0.36        | 54            | 0.29        |
|                             |                       |                         |             | 96            | 0.33        |
|                             |                       |                         |             | 0.8           | .40         |
|                             |                       |                         |             | 26            | 0.18        |
|                             |                       |                         |             |               |             |

|            |           |           |           |            |           |           |            |           |            |             |           |           |           |             |           |            |             |
|------------|-----------|-----------|-----------|------------|-----------|-----------|------------|-----------|------------|-------------|-----------|-----------|-----------|-------------|-----------|------------|-------------|
| <b>CED</b> | <b>BW</b> | <b>WW</b> | <b>YW</b> | <b>DMI</b> | <b>YH</b> | <b>SC</b> | <b>DOC</b> | <b>HP</b> | <b>CEM</b> | <b>MILK</b> | <b>MW</b> | <b>MH</b> | <b>CW</b> | <b>Marb</b> | <b>RE</b> | <b>Fat</b> | <b>Tend</b> |
| 39         | 41        | 33        | 31        | 89         | 29        | 32        | 8          | 53        | 13         | 17          | 56        | 75        | 29        | 78          | 33        | 23         | 11          |

YW/Ratio: 1120/100

- Smaller framed Tour of Duty son
- Long stride, smooth walking bull
- Lady x SAV breeding, high maternal, keep the heifers

# 22 PALM Tour of Duty 5047

BD: 05/13/15

Bull 18641546

Tattoo: 5047

|                             |                   |                          |             |               |             |
|-----------------------------|-------------------|--------------------------|-------------|---------------|-------------|
| WERNER WAR PARTY 2417       |                   | CONNEALY ONWARD          |             | <b>MARB</b>   |             |
| <b>R B TOUR OF DUTY 177</b> |                   | BAAR USA LADY JAYE 489   |             | <b>RE</b>     |             |
| 16984170                    | B A LADY 6807 305 | VERMILION DATELINE 7078  |             | <b>SW</b>     |             |
| SYDGEN C C & 7              |                   | G D LADY HI FLYER 302    |             | <b>SB</b>     |             |
| PALM JANET 013              |                   | S A F CONNECTION         |             | <b>ACT BW</b> |             |
| 17326294                    | ALC JANET A15N    | SYDGEN FOREVER LADY 4087 |             | 156.49        |             |
|                             |                   | SITZ ALLIANCE 6595       |             |               |             |
|                             |                   | ALC JANET C13J           |             |               |             |
| <b>CED</b>                  | <b>BEPD</b>       | <b>WEPD</b>              | <b>YEPD</b> | <b>SC</b>     | <b>MILK</b> |
| 2                           | 0.33              | 2.6                      | 0.35        | 62            | 0.28        |
|                             |                   |                          |             | 109           | 0.32        |
|                             |                   |                          |             | 0.69          | .40         |
|                             |                   |                          |             | 28            | 0.17        |
|                             |                   |                          |             |               |             |

|            |           |           |           |            |           |           |            |           |            |             |           |           |           |             |           |            |             |
|------------|-----------|-----------|-----------|------------|-----------|-----------|------------|-----------|------------|-------------|-----------|-----------|-----------|-------------|-----------|------------|-------------|
| <b>CED</b> | <b>BW</b> | <b>WW</b> | <b>YW</b> | <b>DMI</b> | <b>YH</b> | <b>SC</b> | <b>DOC</b> | <b>HP</b> | <b>CEM</b> | <b>MILK</b> | <b>MW</b> | <b>MH</b> | <b>CW</b> | <b>Marb</b> | <b>RE</b> | <b>Fat</b> | <b>Tend</b> |
| 75         | 52        | 4         | 6         | 47         | 22        | 33        | 1          | 30        | 56         | 4           | 35        | 30        | 7         | 67          | 46        | 17         | 64          |

YW/Ratio: 1150/103

- Very deep, big barreled Tour of Duty son
- Big boned and big hoofed, rugged bull
- His dam is hard-working, high maternal cow that injects high growth and more bone into her calves

# 24 PALM Future Duty 5051

BD: 05/14/15

Bull 18659988

Tattoo: 5051

|                                 |                          |                          |             |               |             |
|---------------------------------|--------------------------|--------------------------|-------------|---------------|-------------|
| R B TOUR OF DUTY 177            |                          | WERNER WAR PARTY 2417    |             | <b>MARB</b>   |             |
| <b>RB FUTURE DUTY 0750-3117</b> |                          | B A LADY 6807 305        |             | <b>RE</b>     |             |
| 17704419                        | R B LADY ANSWER 750-0750 | S A V FINAL ANSWER 0035  |             | <b>SW</b>     |             |
| SITZ UPWARD 307R                |                          | R B LADY FOCUS 013-750   |             | <b>SB</b>     |             |
| PALM LUCY 347                   |                          | CONNEALY ONWARD          |             | <b>ACT BW</b> |             |
| 18645453                        | CHAMPION HILL LUCY 6863  | SITZ HENRIETTA PRIDE 81M |             | 123.75        |             |
|                                 |                          | S A V NET WORTH 4200     |             |               |             |
|                                 |                          | CHAMPION HILL LUCY 3062  |             |               |             |
| <b>CED</b>                      | <b>BEPD</b>              | <b>WEPD</b>              | <b>YEPD</b> | <b>SC</b>     | <b>MILK</b> |
| 7                               | 0.26                     | 0.2                      | 0.31        | 48            | 0.22        |
|                                 |                          |                          |             | 92            | 0.28        |
|                                 |                          |                          |             | 1.13          | .36         |
|                                 |                          |                          |             | 35            | 0.13        |
|                                 |                          |                          |             |               |             |

|            |           |           |           |            |           |           |            |           |            |             |           |           |           |             |           |            |             |
|------------|-----------|-----------|-----------|------------|-----------|-----------|------------|-----------|------------|-------------|-----------|-----------|-----------|-------------|-----------|------------|-------------|
| <b>CED</b> | <b>BW</b> | <b>WW</b> | <b>YW</b> | <b>DMI</b> | <b>YH</b> | <b>SC</b> | <b>DOC</b> | <b>HP</b> | <b>CEM</b> | <b>MILK</b> | <b>MW</b> | <b>MH</b> | <b>CW</b> | <b>Marb</b> | <b>RE</b> | <b>Fat</b> | <b>Tend</b> |
| 39         | 15        | 36        | 22        | 89         | 50        | 10        | 26         | 17        | 23         | 1           | 83        | 49        | 34        | 87          | 33        | 22         | 89          |

YW/Ratio: 1086/97

- Tour of Duty grandson
- Bought sire in 2014 from RB, used on my replacement heifers as a cleanup bull, then sold him to Stricherz Ranch of Labolt, SD as a 2-year-old in my 2015 sale



# 28 PALM Upward 5016

BD: 05/02/15 Bull 18655796 Tattoo: 5016

|                          |  |                           |  |               |
|--------------------------|--|---------------------------|--|---------------|
| CONNEALY ONWARD          |  | CONNEALY LEAD ON          |  | <b>MARB</b>   |
| SITZ UPWARD 307R         |  | ALTUNE OF CONANGA 6104    |  | 0.68          |
| 14963730                 |  | SITZ VALUE 7097           |  | <b>RE</b>     |
| SITZ HENRIETTA PRIDE 81M |  | SITZ HENRIETTA PRIDE 1370 |  | 0.57          |
| G A R EXPECTATION 4915   |  | N BAR EMULATION EXT       |  | <b>SW</b>     |
| RITA 3X29 OF 2536 EXP    |  | G A R TRAVELER 2421       |  | 63.72         |
| 14354975                 |  | G A R PRECISION 1680      |  | <b>SB</b>     |
| G A R PRECISION 2536     |  | G A R EXT 2104            |  | 137.8         |
|                          |  |                           |  | <b>ACT BW</b> |
|                          |  |                           |  | 57            |

| CED  | BEPD | WEPD | YEPD | SC   | MILK | ACT BW |
|------|------|------|------|------|------|--------|
| 12   | 0.37 | -0.1 | 0.4  | 56   | 0.32 | 104    |
| 0.35 | -0.1 | .44  | 33   | 0.27 |      |        |

| CED | BW | WW | YW | DMI | YH | SC | DOC | HP | CEM | MILK | MW | MH | CW | Marb | RE | Fat | Tend |
|-----|----|----|----|-----|----|----|-----|----|-----|------|----|----|----|------|----|-----|------|
| 11  | 17 | 22 | 9  | 100 | 10 | 80 | 36  | 51 | 12  | 5    | 36 | 50 | 1  | 61   | 14 | 24  | 49   |

- YW/Ratio: 1152/103**
- Good feet and legs on this Upward son
  - Will make good daughters

# 30 PALM Earnan 5030

BD: 05/07/15 Bull 18671452 Tattoo: 5030

|                              |  |                        |  |               |
|------------------------------|--|------------------------|--|---------------|
| CONNEALY EARNAN 076E         |  | KMK ALLIANCE 6595 187  |  | <b>MARB</b>   |
| 16969555                     |  | BLINDA OF CONANGA 004  |  | .49           |
| BRAZILA OF CONANGA 3991 839A |  | CONNEALY TOBIN         |  | <b>RE</b>     |
| R B TOUR OF DUTY 177         |  | BREEHA OF CONANGA 1251 |  | .46           |
| CAV LADY TOUR 9740-3974      |  | WERNER WAR PARTY 2417  |  | <b>SW</b>     |
| 17544952                     |  | B A LADY 6807 305      |  | 71.31         |
| R B LADY STANDARD 9740-739   |  | LCC NEW STANDARD       |  | <b>SB</b>     |
|                              |  | R B LADY FOCUS 013-739 |  | 124.46        |
|                              |  |                        |  | <b>ACT BW</b> |
|                              |  |                        |  | 78            |

| CED  | BEPD | WEPD | YEPD | SC  | MILK | ACT BW |
|------|------|------|------|-----|------|--------|
| 4    | 0.34 | 0.7  | 0.37 | 62  | 0.29 | 109    |
| 0.32 | 1.4  | .40  | 27   | 0.2 |      |        |

| CED | BW | WW | YW | DMI | YH | SC | DOC | HP | CEM | MILK | MW | MH | CW | Marb | RE | Fat | Tend |
|-----|----|----|----|-----|----|----|-----|----|-----|------|----|----|----|------|----|-----|------|
| 80  | 36 | 7  | 8  | 50  | 40 | 14 | 11  | 31 | 19  | 22   | 74 | 31 | 77 | 75   | 83 | 31  | 87   |

- YW/Ratio: 1094/98**
- Flush brother to Lot 29, PALM Earnan 5019
  - Dam sells a Lot 47
  - Very attractive bull
  - Like his brother, will sire calves that are VERY marketable!

# 31 PALM Up River 5034

BD: 05/08/15 Bull 18645278 Tattoo: 5034

|                      |  |                           |  |               |
|----------------------|--|---------------------------|--|---------------|
| THOMAS UP RIVER 1614 |  | CONNEALY ONWARD           |  | <b>MARB</b>   |
| 17091363             |  | SITZ HENRIETTA PRIDE 81M  |  | 0.45          |
| THOMAS CAROL 7595    |  | RITO 112 OF 2536 RITO 616 |  | <b>RE</b>     |
| CONNEALY MENTOR 7374 |  | THOMAS CAROL 1246         |  | 0.66          |
| PALM PRINCESS 122    |  | G A R RETAIL PRODUCT      |  | <b>SW</b>     |
| 17277722             |  | EXECUTA OF CONANGA 939    |  | 63.6          |
| P A R PRINCESS 201N  |  | BON VIEW NEW DESIGN 878   |  | <b>SB</b>     |
|                      |  | ALC PRINCESS S09L         |  | 144.8         |
|                      |  |                           |  | <b>ACT BW</b> |
|                      |  |                           |  | 72            |

| CED  | BEPD | WEPD | YEPD | SC   | MILK | ACT BW |
|------|------|------|------|------|------|--------|
| 11   | 0.3  | -0.1 | 0.34 | 55   | 0.27 | 101    |
| 0.31 | 2.59 | .39  | 34   | 0.15 |      |        |

| CED | BW | WW | YW | DMI | YH | SC | DOC | HP | CEM | MILK | MW | MH | CW | Marb | RE | Fat | Tend |
|-----|----|----|----|-----|----|----|-----|----|-----|------|----|----|----|------|----|-----|------|
| 25  | 22 | 39 | 28 | 59  | 36 | 1  | 71  | 13 | 84  | 3    | 43 | 59 | 3  | 68   | 26 | 58  | 51   |

- YW/Ratio: 1172/105**
- Out of a very attractive, maternal-looking cow
  - Really nice made bull, long spined, good feet and legs
  - Lots of maternal in this bull's pedigree
  - HEIFER Bull

# 29 PALM Earnan 5019

BD: 05/04/15 Bull 18671674 Tattoo: 5019

|                              |  |                        |  |               |
|------------------------------|--|------------------------|--|---------------|
| CONNEALY EARNAN 076E         |  | KMK ALLIANCE 6595 187  |  | <b>MARB</b>   |
| 16969555                     |  | BLINDA OF CONANGA 004  |  | .67           |
| BRAZILA OF CONANGA 3991 839A |  | CONNEALY TOBIN         |  | <b>RE</b>     |
| R B TOUR OF DUTY 177         |  | BREEHA OF CONANGA 1251 |  | .76           |
| CAV LADY TOUR 9740-3974      |  | WERNER WAR PARTY 2417  |  | <b>SW</b>     |
| 17544952                     |  | B A LADY 6807 305      |  | 63.72         |
| R B LADY STANDARD 9740-739   |  | LCC NEW STANDARD       |  | <b>SB</b>     |
|                              |  | R B LADY FOCUS 013-739 |  | 148.20        |
|                              |  |                        |  | <b>ACT BW</b> |
|                              |  |                        |  | 79            |

| CED  | BEPD | WEPD | YEPD | SC  | MILK | ACT BW |
|------|------|------|------|-----|------|--------|
| 3    | 0.34 | 0    | 0.37 | 65  | 0.29 | 112    |
| 0.32 | 1.1  | .40  | 29   | 0.2 |      |        |

| CED | BW | WW | YW | DMI | YH | SC | DOC | HP | CEM | MILK | MW | MH | CW | Marb | RE | Fat | Tend |
|-----|----|----|----|-----|----|----|-----|----|-----|------|----|----|----|------|----|-----|------|
| 84  | 21 | 3  | 5  | 24  | 43 | 26 | 21  | 11 | 15  | 11   | 50 | 31 | 49 | 60   | 31 | 46  | 83   |

- YW/Ratio: 1200/107**
- Flush brother to Lot 30, PALM Earnan 5030
  - Dam sells as Lot 47
  - Very wide-based bull
  - Lots of power in this mating
  - Will make awesome daughters and scale-crushing steers!
  - Another personal favorite



# 32 PALM Capitalist 5061

BD: 05/30/15 Bull 18674059 Tattoo: 5061

|                             |  |                             |  |               |
|-----------------------------|--|-----------------------------|--|---------------|
| CONNEALY CAPITALIST 028     |  | S A V FINAL ANSWER 0035     |  | <b>MARB</b>   |
| 16752262                    |  | SITZ TRAVELER 8180          |  | 0.65          |
| PRIDES PITA OF CONANGA 8821 |  | S A V EMULOUS 8145          |  | <b>RE</b>     |
| S A V FINAL ANSWER 0035     |  | C R A BEXTOR 872 5205 608   |  | 0.62          |
| BOYD EURO REEKA 9109        |  | PRIDES TRAV OF CONANGA 6499 |  | <b>SW</b>     |
| 16590065                    |  | SITZ TRAVELER 8180          |  | 63.47         |
| EURO REEKA OF CONANGA 3539  |  | S A V EMULOUS 8145          |  | <b>SB</b>     |
|                             |  | RITO 112 OF 2536 RITO 616   |  | 85.60         |
|                             |  | EURO COPA OF CONANGA 869    |  |               |
|                             |  |                             |  | <b>ACT BW</b> |
|                             |  |                             |  | 78            |

| CED  | BEPD | WEPD | YEPD | SC   | MILK | ACT BW |
|------|------|------|------|------|------|--------|
| 6    | 0.35 | 1.1  | 0.37 | 58   | 0.29 | 100    |
| 0.33 | 0.85 | .41  | 26   | 0.23 |      |        |

| CED | BW | WW | YW | DMI | YH | SC | DOC | HP | CEM | MILK | MW | MH | CW | Marb | RE | Fat | Tend |
|-----|----|----|----|-----|----|----|-----|----|-----|------|----|----|----|------|----|-----|------|
| 21  | 20 | 15 | 18 | 80  | 91 | 18 | 62  | 36 | 20  | 53   | 51 | 54 | 88 | 69   | 83 | 91  | 41   |

- YW/Ratio: 1176/105**
- HEIFER Bull
  - More frame than most heifer bulls
  - Double bred Final Answer will make very nice replacement heifers



# Yearling Bulls

## 38 PALM Grid Maker 6001

BD: 01/14/16 Bull 18645082 Tattoo: 6001

|                              |  |                          |                           |               |
|------------------------------|--|--------------------------|---------------------------|---------------|
| G A R GRID MAKER<br>13254554 |  | G D A R TRAVELER 044     | D H D TRAVELER 6807       | <b>MARB</b>   |
| PALM RITA 022<br>17346228    |  | G A R PRECISION 2536     | G D A R BLACKCAP LADY 840 | 0.29          |
|                              |  | S A V FINAL ANSWER 0035  | G A R PRECISION 1680      | <b>RE</b>     |
|                              |  | LCC DESIGN EXT 1407 3001 | G A R EXT 2104            | 1.05          |
|                              |  |                          | SITZ TRAVELER 8180        | <b>SW</b>     |
|                              |  |                          | S A V EMULOUS 8145        | 47.64         |
|                              |  |                          | BON VIEW NEW DESIGN 1407  | <b>SB</b>     |
|                              |  |                          | G A R EXT 755             | 97.6          |
|                              |  |                          |                           | <b>ACT BW</b> |
|                              |  |                          |                           | 94            |

| CED  | BEPD | WEPD | YEPD | SC   | MILK | ACT BW |
|------|------|------|------|------|------|--------|
| 4    | 0.34 | 3.3  | 0.36 | 63   | 0.28 | 107    |
| 0.33 | 0.18 | .40  | 16   | 0.22 |      |        |

| CED | BW | WW | YW | DMI | YH | SC | DOC | HP | CEM | MILK | MW | MH | CW | Marb | RE | Fat | Tend |
|-----|----|----|----|-----|----|----|-----|----|-----|------|----|----|----|------|----|-----|------|
| 27  | 79 | 5  | 10 | 86  | 33 | 83 | 10  | 73 | 9   | 90   | 18 | 26 | 63 | 86   | 18 | 45  | 11   |

Act. WW 10/4/16: 842#

- A real good bull to start off our yearling offering
- Big boned, muscular good looking bull
- Dam is a big powerful Final Answer daughter that serves as one of my donor cows



## 39 Musgrave Fast Cash 121 960

BD: 01/29/16 Bull 18440633 Tattoo: 121

|  |  |                     |                         |               |
|--|--|---------------------|-------------------------|---------------|
| KR CASH 4401<br>17936550               |  | BARSTOW CASH        | SITZ DASH 10277         | <b>MARB</b>   |
| MCATL MISS EMULOUS 960-822<br>16791745 |  | WK ANITA LASS 2054  | BARSTOW QUEEN W16       | 0.52          |
|  |  | H S A F BANDO 1961  | WK GEORGE               | <b>RE</b>     |
|  |  | MA MISS EMULOUS 822 | THOENE NET WORTH H56    | 0.53          |
|  |  |                     | S A F 598 BANDO 5175    | <b>SW</b>     |
|  |  |                     | J K S MISS CHEYENNE 196 | 56.35         |
|  |  |                     | WAR ALLIANCE 9126 6006  | <b>SB</b>     |
|  |  |                     | EXAR MISS EMULOUS 7662  | 135.41        |
|  |  |                     |                         | <b>ACT BW</b> |
|  |  |                     |                         |               |

| CED  | BEPD | WEPD | YEPD | SC   | MILK | ACT BW |
|------|------|------|------|------|------|--------|
| 7    | 0.28 | -0.7 | 0.33 | 52   | 0.24 | 89     |
| 0.28 | 0.95 | .36  | 25   | 0.16 |      |        |

| CED | BW | WW | YW | DMI | YH | SC | DOC | HP | CEM | MILK | MW | MH | CW | Marb | RE | Fat | Tend |
|-----|----|----|----|-----|----|----|-----|----|-----|------|----|----|----|------|----|-----|------|
| 60  | 15 | 50 | 62 | 33  | 9  | 21 | 89  | 59 | 21  | 57   | 44 | 54 | 50 | 74   | 66 | 73  | 26   |

Act. WW 10/4/16: 786#

- Heifer Bull
- Very attractive, soft made bull
- Dam is a very good looking Bando 1961 daughter

## 40 Musgrave 316 Capitalist 82

BD: 01/17/16 Bull 18427577 Tattoo: 82

|  |  |                         |                             |               |
|--|--|-------------------------|-----------------------------|---------------|
| LD CAPITALIST 316<br>17666102          |  | CONNEALY CAPITALIST 028 | S A V FINAL ANSWER 0035     | <b>MARB</b>   |
| MUSGRAVE FOREVER LADY 5022<br>18383543 |  | LD DIXIE ERICA 2053     | PRIDES PITA OF CONANGA 8821 | 0.18          |
|  |  | MCATL VANGUARD 103-828  | C A FUTURE DIRECTION 5321   | <b>RE</b>     |
|  |  | ALC FOREVER LADY 145U   | LD DIXIE ERICA OAR 0853     | 0.73          |
|  |  |                         | S A V PIONEER 7301          | <b>SW</b>     |
|  |  |                         | MCATL RITO JET 828-R216     | 71.69         |
|  |  |                         | MYTTY IN FOCUS              | <b>SB</b>     |
|  |  |                         | ALC FOREVER LADY T46N       | 86.02         |
|  |  |                         |                             | <b>ACT BW</b> |
|  |  |                         |                             |               |

| CED  | BEPD | WEPD | YEPD | SC   | MILK | ACT BW |
|------|------|------|------|------|------|--------|
| 13   | 0.29 | -1.3 | 0.34 | 58   | 0.26 | 94     |
| 0.29 | 1.53 | .37  | 23   | 0.15 |      |        |

| CED | BW | WW | YW | DMI | YH | SC | DOC | HP | CEM | MILK | MW | MH | CW | Marb | RE | Fat | Tend |
|-----|----|----|----|-----|----|----|-----|----|-----|------|----|----|----|------|----|-----|------|
| 14  | 16 | 67 | 77 | 26  | 91 | 5  | 80  | 27 | 21  | 53   | 92 | 75 | 70 | 90   | 40 | 89  | 29   |

Act. WW 10/4/16: 764#

- Heifer Bull
- I really like this bull because he has straight lines and big hip
- Dam is a smaller framed, hard-working cow

## 41 Musgrave 316 Capitalist 101

BD: 01/22/16 Bull 18427566 Tattoo: 101

|                                    |  |                            |                             |               |
|------------------------------------|--|----------------------------|-----------------------------|---------------|
| LD CAPITALIST 316<br>17666102      |  | CONNEALY CAPITALIST 028    | S A V FINAL ANSWER 0035     | <b>MARB</b>   |
| MUSGRAVE CAROLINE 1243<br>17511835 |  | LD DIXIE ERICA 2053        | PRIDES PITA OF CONANGA 8821 | 0.65          |
|                                    |  | J D FINAL ANSWER 105       | C A FUTURE DIRECTION 5321   | <b>RE</b>     |
|                                    |  | MCATL LADY CAROLINE 391-96 | LD DIXIE ERICA OAR 0853     | 0.79          |
|                                    |  |                            | S A V FINAL ANSWER 0035     | <b>SW</b>     |
|                                    |  |                            | J D PRIDE 8473              | 69            |
|                                    |  |                            | MCATL PURE PRODUCT 903-55   | <b>SB</b>     |
|                                    |  |                            | M A LADY CAROLINE 96-1103   | 112.26        |
|                                    |  |                            |                             | <b>ACT BW</b> |
|                                    |  |                            |                             |               |

| CED  | BEPD | WEPD | YEPD | SC   | MILK | ACT BW |
|------|------|------|------|------|------|--------|
| 13   | 0.29 | -0.5 | 0.34 | 62   | 0.25 | 103    |
| 0.29 | 0.41 | .37  | 25   | 0.14 |      |        |

| CED | BW | WW | YW | DMI | YH | SC | DOC | HP | CEM | MILK | MW | MH | CW | Marb | RE | Fat | Tend |
|-----|----|----|----|-----|----|----|-----|----|-----|------|----|----|----|------|----|-----|------|
| 13  | 16 | 33 | 29 | 78  | 39 | 46 | 80  | 43 | 9   | 44   | 54 | 61 | 49 | 57   | 42 | 96  | 65   |

Act. WW 10/4/16: 702#

- Heifer Bull
- Smaller framed bull, but has a lot of base width and muscle expression

### LIVESTOCK MORTALITY INSURANCE:

To properly insure your investment, an agent from Martin-Trudeau Insurance will be on hand sale day. Palm Angus will pay 1/2 of the premium for mortality insurance on 2-year-old bulls purchased for \$4,000 or more and 1/2 of the premium on Yearling bulls purchased for \$3,000 or more.

# Guest Consignor John Blohm

John and I met 2 years ago when he bought 2 bulls from me. He liked my program and wanted to have some elite females to add to his cowherd. We are offering a few yearlings this year to grow this part of the offering. Yes, they are on the green side, but please study their pedigrees, they will grow into some pretty good bulls. Next year, we will be offering 20 ET bulls that were born the end of December and January. So this will be very exciting addition to my sale.

I will be stand behind these bulls 100% just like my own bulls so if there are any problems just contact me.

John Blohm  
33672 270th St. • Reinbeck, IA 50669  
Cell 319-231-9422w

## 42 BF on Tour 601

BD: 02/23/16 Bull 18685698 Tattoo: 601

|                       |      |                         |      |      |      |        |      |    |
|-----------------------|------|-------------------------|------|------|------|--------|------|----|
| WERNER WAR PARTY 2417 |      | CONNEALY ONWARD         |      | MARB |      |        |      |    |
| R B TOUR OF DUTY 177  |      | BAAR USA LADY JAYE 489  |      | RE   |      |        |      |    |
| +16984170             |      | VERMILION DATELINE 7078 |      | SW   |      |        |      |    |
| B A LADY 6807 305     |      | G D LADY HI FLYER 302   |      | SB   |      |        |      |    |
| O C C EMBLAZON 854E   |      | D H D TRAVELER 6807     |      |      |      |        |      |    |
| COLEMAN DONNA 9125    |      | DIXIE ERICA OF C H 1019 |      |      |      |        |      |    |
| 16586418              |      | WULFFS EXT 6106         |      |      |      |        |      |    |
| COLEMAN DONNA 6153    |      | KMK DONNA J311          |      |      |      |        |      |    |
| CED                   | BEPD | WEPD                    | YEPD | SC   | MILK | ACT BW |      |    |
| I+7                   | 0.05 | I+1.5                   | 0.05 | I+54 | 0.05 | I+23   | 0.05 | 91 |

Act. WW 9/17/16: 676#

- Tour of Duty mating to the Donna cow family made a NICE bull here!
- Will grow into a bigger framed, athletic bull
- Will make nice replacement heifers

## 43 BF Final Weight 602

BD: 02/12/16 Bull 18685699 Tattoo: 602

|                           |      |                           |      |      |      |        |      |      |      |    |
|---------------------------|------|---------------------------|------|------|------|--------|------|------|------|----|
| BASIN PAYWEIGHT 107S      |      | VERMILION PAYWEIGHT J847  |      | MARB |      |        |      |      |      |    |
| MILL COULEE PAYWEIGHT 419 |      | BASIN LUCY 3829           |      | RE   |      |        |      |      |      |    |
| +17994830                 |      | S A V FINAL ANSWER 0035   |      | SW   |      |        |      |      |      |    |
| MILL COULEE BARBARA K 90S |      | MILL COULEE BARBARA K 414 |      | SB   |      |        |      |      |      |    |
| CONNEALY FINAL PRODUCT    |      | CONNEALY PRODUCT 568      |      |      |      |        |      |      |      |    |
| ICC BLACKBIRD 4125        |      | EBONISTA OF CONANGA 471   |      |      |      |        |      |      |      |    |
| 18028394                  |      | S A V FINAL ANSWER 0035   |      |      |      |        |      |      |      |    |
| ICC BLACKBIRD 1814        |      | M A R BLACKBIRD 8067      |      |      |      |        |      |      |      |    |
| CED                       | BEPD | WEPD                      | YEPD | SC   | MILK | ACT BW |      |      |      |    |
| I+1.1                     | 0.05 | I+1.1                     | 0.05 | I+65 | 0.05 | I+111  | 0.05 | I+26 | 0.05 | 86 |

Act. WW 9/17/16: 726#

- Young smooth shouldered bull
- Moves well and will grow into a powerful bull

## 44 BF Payweight 603

BD: 02/18/16 Bull 18689093 Tattoo: 603

|                           |      |                          |      |      |      |        |
|---------------------------|------|--------------------------|------|------|------|--------|
| BASIN PAYWEIGHT 006S      |      | VERMILION PAYWEIGHT J847 |      | MARB |      |        |
| BASIN PAYWEIGHT 1682      |      | BASIN LUCY 3829          |      | RE   |      |        |
| +17038724                 |      | HARB PENDLETON 765 J H   |      | SW   |      |        |
| 21AR O LASS 7017          |      | 21AR O LASS F24A         |      | SB   |      |        |
| EXAR DENVER 2002B         |      | EXAR UPSHOT 0562B        |      |      |      |        |
| ICC EVERELDA ENTENSE 4142 |      | EXAR ROYAL LASS 1067     |      |      |      |        |
| +17940621                 |      | A A R NEW TREND          |      |      |      |        |
| BT EVERELDA ENTENSE 837L  |      | BT EVERELDA ENTENSE 57D  |      |      |      |        |
| CED                       | BEPD | WEPD                     | YEPD | SC   | MILK | ACT BW |
|                           |      |                          |      |      |      | 83     |

Act. WW 9/17/16: 660#

- Real neat mating here... Payweight 1682 to a Denver daughter!
- Expect a little more frame and growth from Denver on the calving ease and easy keeping ability of 1682

**FREE KEEP** until  
April 1, 2017. After April  
1 boarding cost will be  
\$3 per day/per head.

# Featured Females



45

## 45 PALM Blackcap May 318

BD: 5/4/13 Cow 18253416 Tattoo: 318

CONNEALY CONSENSUS  
CONNEALY CONSENSUS 7229  
16447771  
BLUE LILLY OF CONANGA 16  
S A V IRON MOUNTAIN 8066  
S A V BLACKCAP MAY 1384  
16959588  
S A V BLACKCAP MAY 4136

KMK ALLIANCE 6595 187  
BLINDA OF CONANGA 004  
WOODHILL ADMIRAL 77K  
BLUE CASH OF CONANGA 6020  
TC GRIDIRON 258  
S A V MADAME PRIDE 3249  
S A V 8180 TRAVELER 004  
S A V MAY 2397

|        |
|--------|
| MARB   |
| 0.78   |
| RE     |
| 0.94   |
| SW     |
| 53.77  |
| SB     |
| 134.31 |
| ACT BW |
| 82     |

| CED | BEPD | WEPD | YEPD | SC | MILK |
|-----|------|------|------|----|------|
| -9  | 0.35 | 5.4  | 0.38 | 65 | 0.3  |
| 112 | 0.34 | 0.76 | 0.42 | 24 | 45   |

- Sells open ready to flush
- Opportunities knocking here!!!!
- Flush sister to SAV Blackcap May 3175 that was sold to Edgar Bros in my 2015 sale
- Granddam is the phenomenal Blackcap May 4136
- This female has the "WOW" factor!
- Her ET heifer calf by Tour of Duty sells as Lot 46
- Flushed 5 times with a total of 24 embryos

## 46 PALM Blackcap May 628

BD: 4/19/16 Cow 18674094 Tattoo: 628

WERNER WAR PARTY 2417  
R B TOUR OF DUTY 177  
16984170  
B A LADY 6807 305  
CONNEALY CONSENSUS 7229  
PALM BLACKCAP MAY 318  
18253416  
S A V BLACKCAP MAY 1384

CONNEALY ONWARD  
BAAR USA LADY JAYE 489  
VERMILION DATELINE 7078  
G D LADY HI FLYER 302  
CONNEALY CONSENSUS  
BLUE LILLY OF CONANGA 16  
S A V IRON MOUNTAIN 8066  
S A V BLACKCAP MAY 4136

|        |
|--------|
| MARB   |
| 0.62   |
| RE     |
| 0.94   |
| SW     |
| 60.31  |
| SB     |
| 152    |
| ACT BW |
| 92     |

| CED | BEPD | WEPD | YEPD | SC | MILK |
|-----|------|------|------|----|------|
| -2  | 0.05 | 3.9  | 0.05 | 66 | 0.05 |
| 117 | 0.05 | 0.73 | 0.05 | 27 | 25   |

- WW: 764
- Combines the two best cows in the Angus industry, the Lady and Blackcap May cow families
  - This POWERFUL female has a lot of performance bred into her and she shows it! She will produce BIG powerful bulls!
  - The opportunities are endless with this heifer!

### Lots 47 and 47A Sell as Pair

## 47 CAV Lady Tour 9740-3974

BD: 1/22/13 Cow 17544952 Tattoo: 3974

WERNER WAR PARTY 2417  
R B TOUR OF DUTY 177  
16984170  
B A LADY 6807 305  
LCC NEW STANDARD  
R B LADY STANDARD 9740-739  
16400067  
R B LADY FOCUS 013-739

CONNEALY ONWARD  
BAAR USA LADY JAYE 489  
VERMILION DATELINE 7078  
G D LADY HI FLYER 302  
BON VIEW NEW DESIGN 1407  
LCC SUNSET K3118  
MYTTY IN FOCUS  
B A LADY 302-013

|        |
|--------|
| MARB   |
| 0.55   |
| RE     |
| 0.57   |
| SW     |
| 70.23  |
| SB     |
| 134.46 |
| ACT BW |
| 69     |

| CED | BEPD | WEPD | YEPD | SC | MILK |
|-----|------|------|------|----|------|
| 10  | 0.31 | 0.2  | 0.36 | 66 | 0.28 |
| 114 | 0.24 | 0.82 | 0.05 | 33 | 4    |

- AWESOME proven young donor here!
- Take a look at her two ET Resource sons, Lot 6 and Lot 7. And her two ET Earnan sons, Lot 29 and Lot 30. And her ET Ten X daughter that sells at Lot 47B
- She has a very maternal look and she demonstrates how good of a female maker Tour of Duty is
- Flushed 8 times with a total of 102 embryos
- Sells as a pair with

## 47A PALM Cashflow 6100

BD: 12/30/16 BULL 18693939 Tattoo: 6100

BARSTOW CASH  
VISION CASH 3414  
17493899  
VISION MISS EMULOUS 111  
R B TOUR OF DUTY 177  
CAV LADY TOUR 9740-3974  
17544952  
R B LADY STANDARD 9740-739

SITZ DASH 10277  
BARSTOW QUEEN W16  
GAMBLES ROYAL FLUSH  
VISION MISS EMULOUS 0045  
WERNER WAR PARTY 2417  
B A LADY 6807 305  
LCC NEW STANDARD  
R B LADY FOCUS 013-739

|         |
|---------|
| MARB    |
| I+0.42  |
| RE      |
| I+0.95  |
| SW      |
| 74.46   |
| SB      |
| +128.88 |
| ACT BW  |
|         |

| CED   | BEPD | WEPD  | YEPD | SC     | MILK |
|-------|------|-------|------|--------|------|
| I+11  | 0.05 | I+3   | 0.05 | I+65   | 0.05 |
| I+114 | 0.05 | I+114 | 0.05 | I+1.15 | 0.05 |
| I+25  | 0.05 |       |      |        |      |

- What an AWESOME herd bull in the making!!
- Buy the pair and have your herd bull bought for next year!



# 47B PALM Lady Ten X 608

BD: 4/5/16

Cow 18671524

Tattoo: 608

|                         |                            |                          |      |        |      |      |      |    |  |      |    |        |  |
|-------------------------|----------------------------|--------------------------|------|--------|------|------|------|----|--|------|----|--------|--|
| MYTTY IN FOCUS          |                            | S A F FOCUS OF E R       |      | MARB   |      |      |      |    |  |      |    |        |  |
| A A R TEN X 7008 S A    |                            | MYTTY COUNTLESS 906      |      | RE     |      |      |      |    |  |      |    |        |  |
| 15719841                | A A R LADY KELTON 5551     | S A V ADAPTOR 2213       |      | SW     |      |      |      |    |  |      |    |        |  |
| R B TOUR OF DUTY 177    |                            | H S A F LADY KELTON 504B |      | 61.63  |      |      |      |    |  |      |    |        |  |
| CAV LADY TOUR 9740-3974 |                            | WERNER WAR PARTY 2417    |      | SB     |      |      |      |    |  |      |    |        |  |
| 17544952                | R B LADY STANDARD 9740-739 | B A LADY 6807 305        |      | ACT BW |      |      |      |    |  |      |    |        |  |
| R B LADY FOCUS 013-739  |                            | LCC NEW STANDARD         |      | 46     |      |      |      |    |  |      |    |        |  |
| CED                     |                            | BEPD                     |      | WEPD   |      | YEPD |      | SC |  | MILK |    | ACT BW |  |
| 9                       | 0.05                       | 0.2                      | 0.05 | 66     | 0.05 | 119  | 0.05 |    |  | 30   | 10 |        |  |

WW: 662

- Born small and raised by a first-calf heifer
- Covers all the bases: calving ease, growth, carcass and maternal
- Opportunities abound

# 48 PALM Blackcap 028

BD: 4/18/10

Cow 17346299

Tattoo: 28

|                            |                          |                            |      |        |      |      |      |      |      |      |   |        |  |
|----------------------------|--------------------------|----------------------------|------|--------|------|------|------|------|------|------|---|--------|--|
| CONNEALY ONWARD            |                          | CONNEALY LEAD ON           |      | MARB   |      |      |      |      |      |      |   |        |  |
| SITZ UPWARD 307R           |                          | ALTUNE OF CONANGA 6104     |      | RE     |      |      |      |      |      |      |   |        |  |
| 14963730                   | SITZ HENRIETTA PRIDE 81M | SITZ VALUE 7097            |      | 0.26   |      |      |      |      |      |      |   |        |  |
| H A R B HIGH PLAINS 975 JH |                          | SITZ HENRIETTA PRIDE 1370  |      | SW     |      |      |      |      |      |      |   |        |  |
| ALC BLACKCAP P90P          |                          | SITZ ALLIANCE 6595         |      | 60.29  |      |      |      |      |      |      |   |        |  |
| 15446125                   | A L C BLACKCAP E03F      | JUANADA ERICA 9024 H A R B |      | SB     |      |      |      |      |      |      |   |        |  |
|                            |                          | N BAR EMULATION EXT        |      | 129.27 |      |      |      |      |      |      |   |        |  |
|                            |                          | BON VIEW BLACKCAP 1330     |      | ACT BW |      |      |      |      |      |      |   |        |  |
| CED                        |                          | BEPD                       |      | WEPD   |      | YEPD |      | SC   |      | MILK |   | ACT BW |  |
| 0                          | 0.29                     | 3                          | 0.32 | 54     | 0.28 | 105  | 0.28 | 1.11 | 0.28 | 37   | 1 |        |  |

- Sells open and ready to flush
- Proven donor cow
- This cow has done an extremely good job for me
- Heavy milking cow in the prime of her life
- Her son PALM Harvester 4071 sold as high seller last year to Dusty Lawrence
- Son sells as Lot 35
- Flushed 4 times with a total of 62 embryos



# 49 PALM Emblynette 641

BD: 4/24/16

Cow Pending

Tattoo: 641

|                              |                         |                             |      |        |      |      |      |      |     |      |      |        |  |
|------------------------------|-------------------------|-----------------------------|------|--------|------|------|------|------|-----|------|------|--------|--|
| RITO 707 OF IDEAL 3407 7075  |                         | R R RITO 707                |      | MARB   |      |      |      |      |     |      |      |        |  |
| S A V RESOURCE 1441          |                         | IDEAL 3407 OF 1418 076      |      | RE     |      |      |      |      |     |      |      |        |  |
| 17016597                     | S A V BLACKCAP MAY 4136 | S A V 8180 TRAVELER 004     |      | 1.05   |      |      |      |      |     |      |      |        |  |
| S A V NET WORTH 4200         |                         | S A V MAY 2397              |      | SW     |      |      |      |      |     |      |      |        |  |
| CHAMPION HILL EMBLYNETTE6052 |                         | S A V 8180 TRAVELER 004     |      | SB     |      |      |      |      |     |      |      |        |  |
| 15734182                     | S A V EMBLYNETTE 7319   | S A V MAY 2410              |      | ACT BW |      |      |      |      |     |      |      |        |  |
|                              |                         | S A V EXT EMULATION 5040    |      | 88     |      |      |      |      |     |      |      |        |  |
|                              |                         | SAV EMBLYNETTE DIAMOND 5369 |      |        |      |      |      |      |     |      |      |        |  |
| CED                          |                         | BEPD                        |      | WEPD   |      | YEPD |      | SC   |     | MILK |      | ACT BW |  |
| 2                            | 0.05                    | 3.9                         | 0.05 | 57     | 0.05 | 102  | 0.05 | 0.86 | .05 | 27   | 0.05 |        |  |

WW: 748

- Personal favorite! This female offers you endless OPPORTUNITIES!
- She is a MUST buy!
- She brings to the table the qualities that Resource is famous for.
- Broody, maternal look with tremendous depth of body and wide based. She is flashy and has that 'WOW' look.



# 50 PALM Emblynette 624

BD: 4/16/16 Cow 18678139 Tattoo: 624

|                                  |             |                           |             |               |             |
|----------------------------------|-------------|---------------------------|-------------|---------------|-------------|
| SITZ UPWARD 307R                 |             | CONNEALY ONWARD           |             | <b>MARB</b>   |             |
| THOMAS UP RIVER 1614<br>17091363 |             | SITZ HENRIETTA PRIDE 81M  |             | 0.4           |             |
| THOMAS CAROL 7595                |             | RITO 112 OF 2536 RITO 616 |             | <b>RE</b>     |             |
|                                  |             | THOMAS CAROL 1246         |             | 0.42          |             |
| S A V 8180 TRAVELER 004          |             | SITZ TRAVELER 8180        |             | <b>SW</b>     |             |
| PALM EMBLYNETTE 025<br>17274306  |             | BOYD FOREVER LADY 8003    |             | 61.95         |             |
| S A V EMBLYNETTE 1180            |             | S A F 598 BANDO 5175      |             | <b>SB</b>     |             |
|                                  |             | S A V EMBLYNETTE 7261     |             | 122.99        |             |
|                                  |             |                           |             | <b>ACT BW</b> |             |
|                                  |             |                           |             | 84            |             |
| <b>CED</b>                       | <b>BEPD</b> | <b>WEPD</b>               | <b>YEPD</b> | <b>SC</b>     | <b>MILK</b> |
| 4                                | 0.05        | 2.3                       | 0.05        | 59            | 0.05        |
| 104                              | 0.05        | 1.39                      | 0.05        | 31            | 10          |

WW: 790

- Bring framed heifer
- A lot of growth in this heifer and cow family

# 51 PALM Elba 604

BD: 4/2/16 Cow 18674092 Tattoo: 604

|                                  |             |                          |             |               |             |
|----------------------------------|-------------|--------------------------|-------------|---------------|-------------|
| WERNER WAR PARTY 2417            |             | CONNEALY ONWARD          |             | <b>MARB</b>   |             |
| R B TOUR OF DUTY 177<br>16984170 |             | BAAR USA LADY JAYE 489   |             | 0.42          |             |
| B A LADY 6807 305                |             | VERMILION DATELINE 7078  |             | <b>RE</b>     |             |
|                                  |             | G D LADY HI FLYER 302    |             | 0.79          |             |
| S A V ANGUS VALLEY 1867          |             | S A V IRON MOUNTAIN 8066 |             | <b>SW</b>     |             |
| PALM ELBA 449<br>18253473        |             | S A V MAY 2397           |             | 58.52         |             |
| CHAMPION HILL ELBA 8010          |             | S A V MOMENTUM 9274      |             | <b>SB</b>     |             |
|                                  |             | CHAMPION HILL ELBA 6719  |             | 146.03        |             |
|                                  |             |                          |             | <b>ACT BW</b> |             |
|                                  |             |                          |             | 80            |             |
| <b>CED</b>                       | <b>BEPD</b> | <b>WEPD</b>              | <b>YEPD</b> | <b>SC</b>     | <b>MILK</b> |
| 7                                | 0.05        | 1.2                      | 0.05        | 56            | 0.05        |
| 103                              | 0.05        | 0.74                     | 0.05        | 28            | 20          |

WW: 706

- Very feminine heifer
- Dam looked the same and she turned into a very good looking, broody, big hipped young cow



## Driving the science of better breeding

There's little room for error in the cattle business. Producers need the most advanced information to make smart selection decisions, and Angus Genetics Inc. (AGI) provides it through genomic-enhanced expected progeny differences (GE-EPDs). EPDs that traditionally contained all pedigree, performance and progeny information now also include results from available genomic, or DNA, tests. Breeders who use genomic technology give buyers access to AGI-generated GE-EPDs that provide:

- Increased predictability and decreased risk for young and unproven animals due to enhanced accuracy of EPDs
- Better characterization of genetics for difficult-to-measure performance traits (such as carcass traits, maternal traits and feed efficiency)
- The ability to make more rapid progress for traits that are important to you, due to:
  - more accurate selection
  - easier identification of genetic outliers
  - the ability to propagate young animals with confidence earlier in their lives

In fact, GE-EPDs on unproven animals have the same amount of accuracy as if they had recorded 7-24 calves, depending on the trait. That's valuable insight, offered regularly through the breed's weekly national cattle evaluation at [www.angus.org](http://www.angus.org).

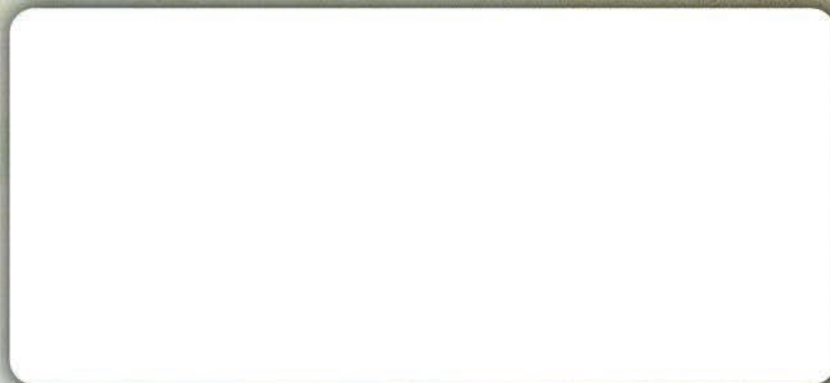
### How do you know if EPDs are genomic-enhanced?

Ask your breeder, refer to the registration paper, or look for the AGI GE-EPD logo or those of partnering labs Zoetis (HD50K, i50K) or GeneSeek (GGP-HD, GGP-LD).





Nathan Palm Angus  
18725 472nd Ave  
Estelline SD 57234



**Nathan Palm  
Angus**  
**PRODUCTION SALE**  
Sunday, **FEBRUARY 19, 2017**  
Glacial Lakes Livestock Sale Facility, Watertown, SD



*Lot 45*

**PALM Blackcap May 318**